

6

5

4

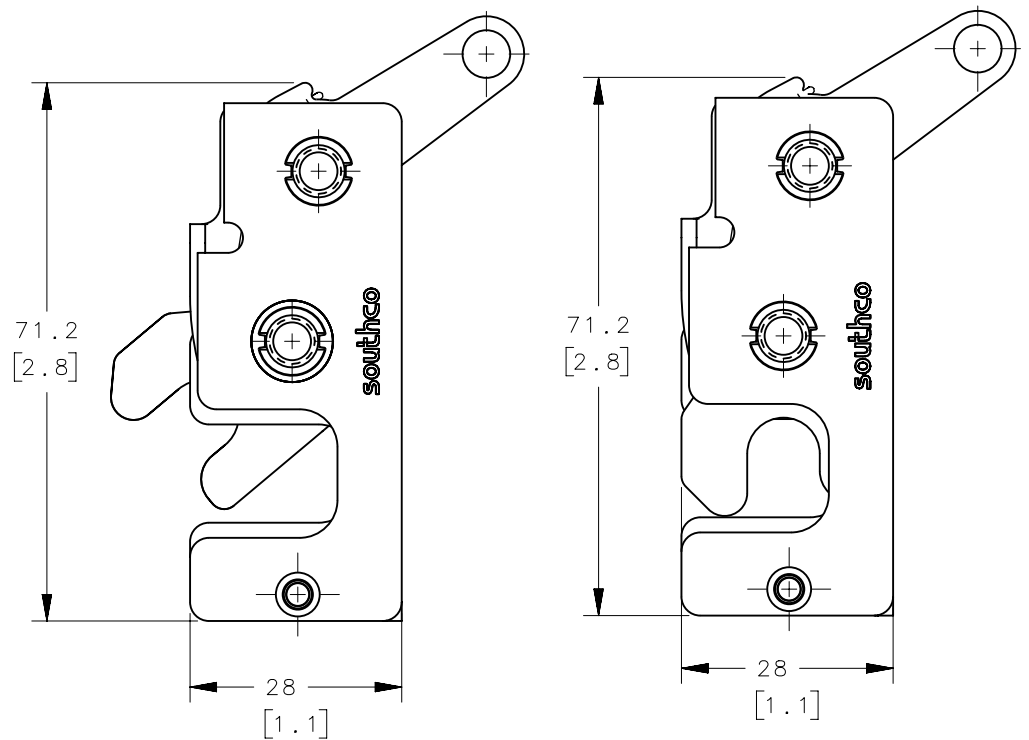
3

2

1

REVISION HISTORY			
REV	DATE	BY	DESCRIPTION
A	19NOV2024	SAK/DMS	PRN:P2024-1963

R4-10-S I-50 B-M



SECONDARY STAGE FOR TWO STAGE LATCHES ONLY

PRIMARY STAGE FOR SINGLE AND TWO STAGE LATCHES

S STAGE & ACTUATION

- 1 SINGLE STAGE, RIGHT HAND
- 2 SINGLE STAGE, LEFT HAND
- 3 TWO STAGE, RIGHT HAND
- 4 TWO STAGE, LEFT HAND

I MOUNTING STYLE

- 0 Ø7.2 [.283] THRU
- 1 1/4-20 THREAD
- 2 M6 X 1 THREAD

M MATERIAL

- 10 STEEL, ZINC PLATED
- 15 STEEL, BLACK ZINC NICKEL PLATED
- 20 STAINLESS STEEL, PASSIVATED
- 77 STEEL, ZINC NICKEL PLATED

B BASE STYLE

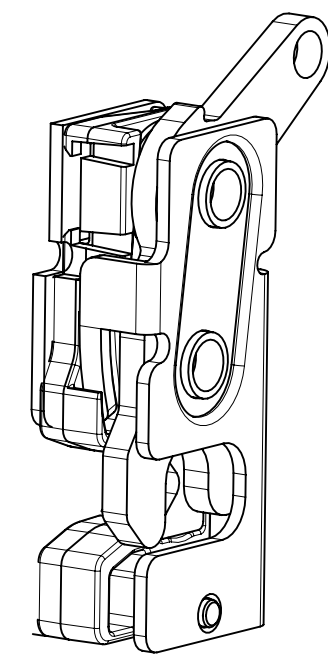
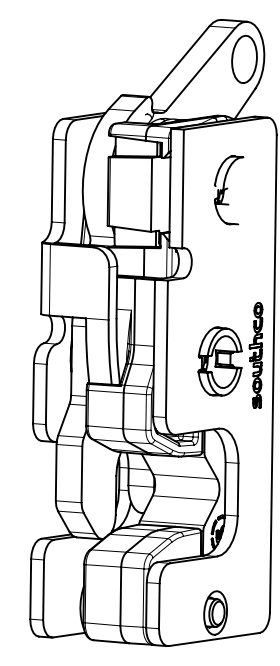
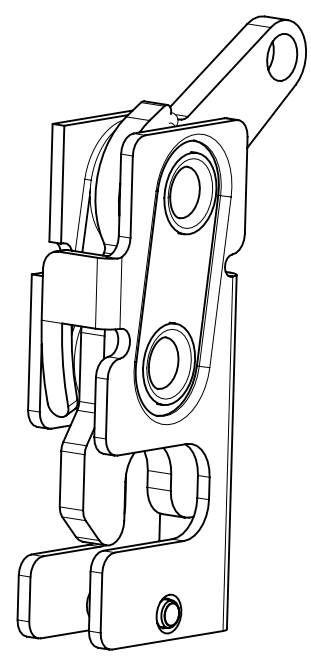
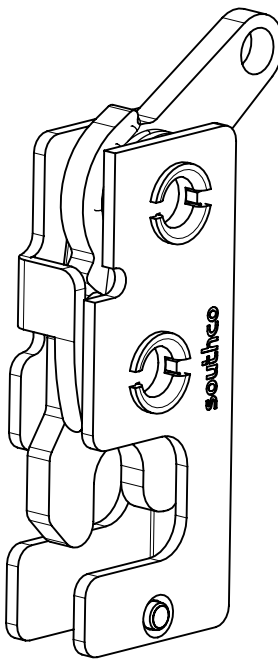
- 1 STANDARD
- 5 INTEGRATED BUMPER

RIGHT HAND, STANDARD

LEFT HAND, STANDARD

RIGHT HAND, INTEGRATED BUMPER

LEFT HAND, INTEGRATED BUMPER



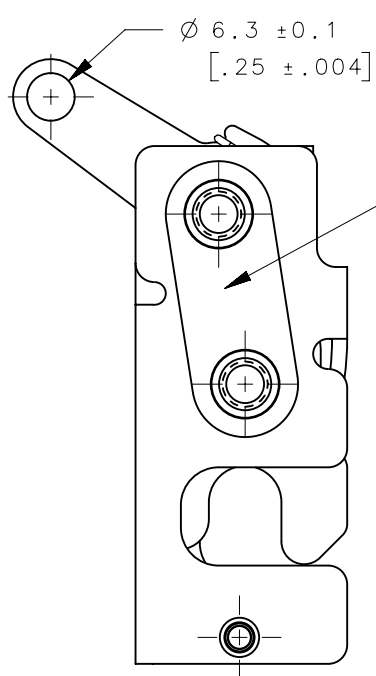
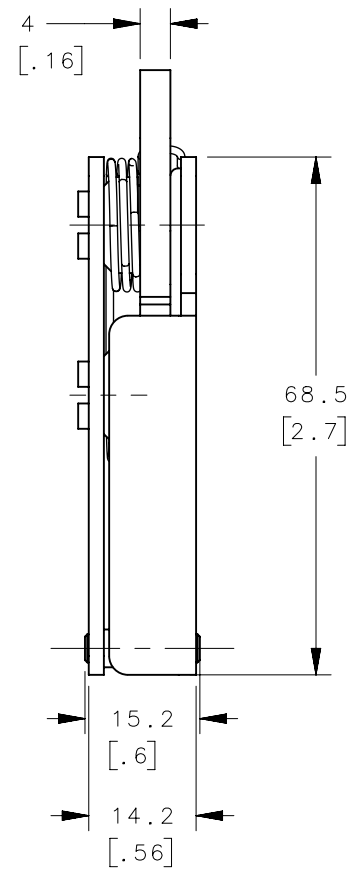
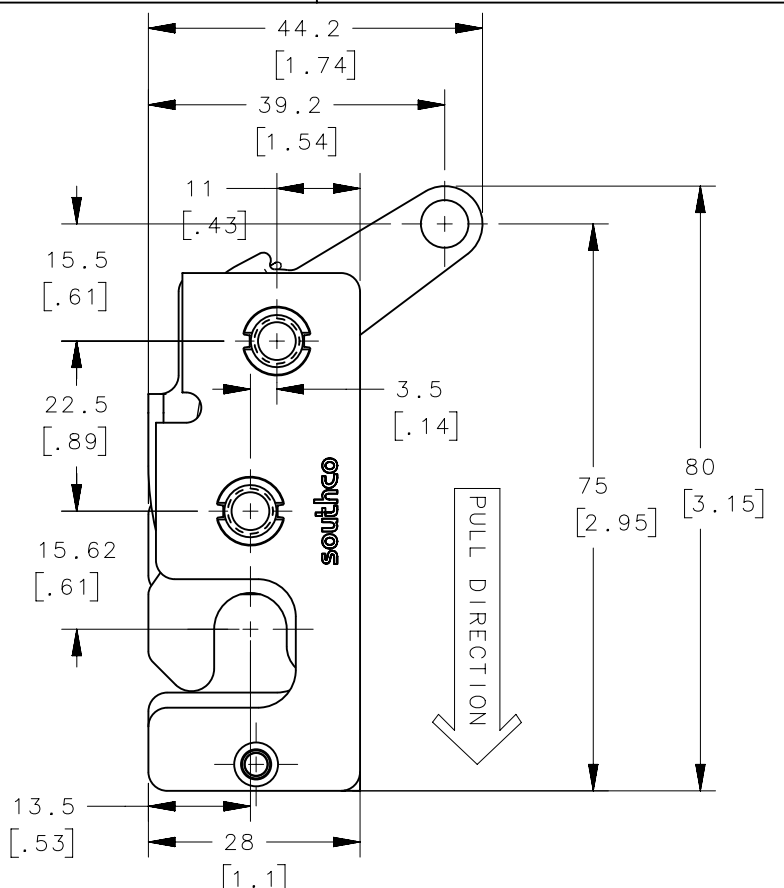
NOTES:

- A. MATERIAL AND FINISH:
- HOUSING, LEVER, PAWL, TRIGGER AND PINS: MATERIAL - STEEL
 - 10 ZINC PLATED, BRIGHT CHROMATE
 - 77 ZINC NICKEL, BRIGHT CHROMATE
 - 15 ZINC NICKEL, BLACK
 - MATERIAL - STAINLESS STEEL
 - 20 PASSIVATED
 - SPRING: STAINLESS STEEL, PASSIVATED

- B. INTEGRATED BUMPER MATERIAL:
- GUIDE - DELRIN, BLACK
 - STOP BLOCK - EPDM, DURO 60, SHORE A

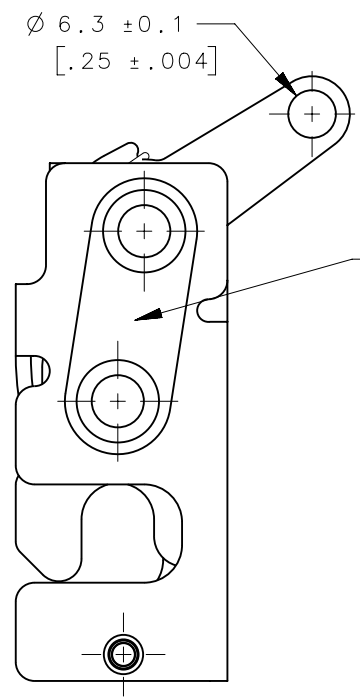
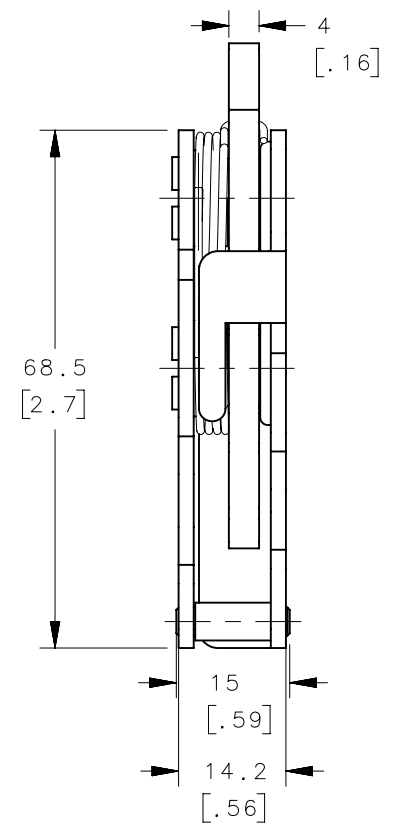
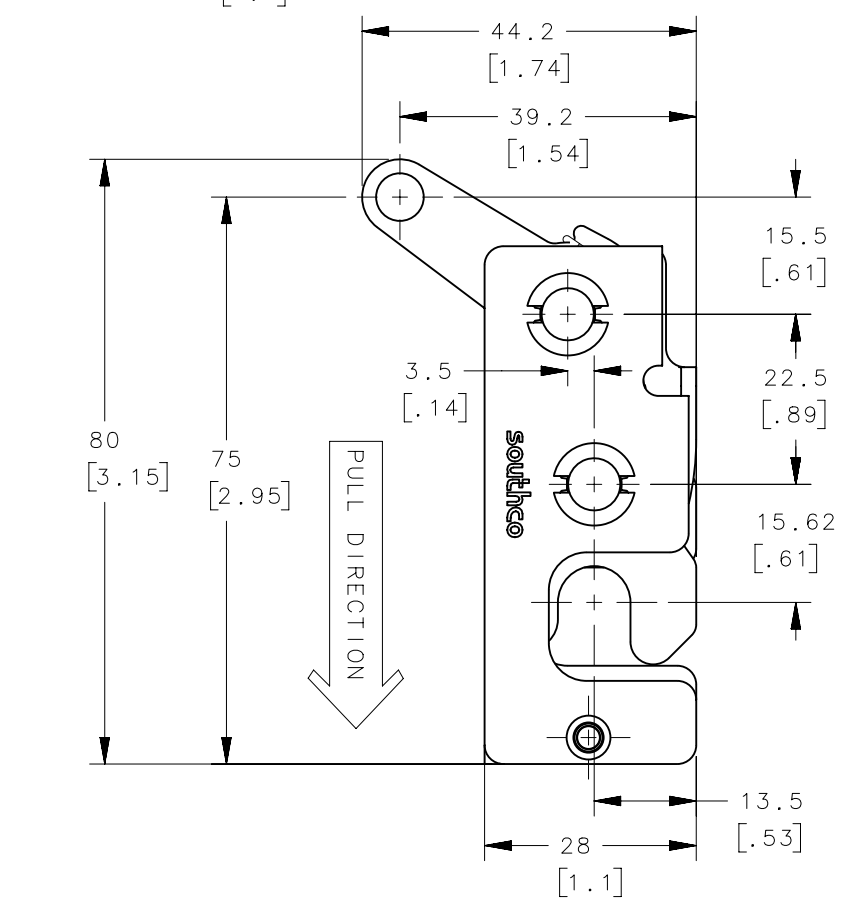
THIRD ANGLE PROJECTION				 CONNECT · CREATE · INNOVATE	
MILLIMETERS [IN]					
TOLERANCES UNLESS OTHERWISE NOTED		DESCRIPTION			
ALL DIMENSIONS WITHOUT TOLERANCES ARE FOR REFERENCE ONLY.		R4 ROTARY LATCH BOTTOM TRIGGER, 6.3 HOLE			
PROPRIETARY ITEM	PER ASME Y14.5M-2009	SIZE	SYSTEM	DWG NO.	
EXCEPT FOR USES EXPRESSLY GRANTED IN WRITING, INFORMATION DISCLOSED HEREON IS CONFIDENTIAL AND ALL RIGHTS, PATENT AND OTHERWISE, ARE RESERVED BY SOUTHCO, INC.		B	NX	J-R4-10-501	
		DRAWN BY	DATE	SCALE	SHEET
		SAK/DMS	19NOV2024	1:1	1 OF 5

REVISION HISTORY			
REV	DATE	BY	DESCRIPTION
A	19NOV2024	SAK/DMS	PRN:P2024-1963



OPTIMAL MOUNTING SURFACE
FOR RIGHT HAND LATCH

RIGHT HAND LATCH, STANDARD
(R4-10-1X-501-XX OR R4-10-3X-501-XX)



OPTIMAL MOUNTING SURFACE
FOR RIGHT LEFT LATCH

LEFT HAND LATCH, STANDARD
(R4-10-2X-501-XX OR R4-10-4X-501-XX)

PROPRIETARY ITEM <small>EXCEPT FOR USES EXPRESSLY GRANTED IN WRITING, INFORMATION DISCLOSED HEREON IS CONFIDENTIAL AND ALL RIGHTS, PATENT AND OTHERWISE, ARE RESERVED BY SOUTHCO, INC.</small>	THIRD ANGLE PROJECTION			
	MILLIMETERS [IN]			
	TOLERANCES UNLESS OTHERWISE NOTED	DESCRIPTION		
	ALL DIMENSIONS WITHOUT TOLERANCES ARE FOR REFERENCE ONLY.	R4 ROTARY LATCH BOTTOM TRIGGER, 6.3 HOLE		
PER ASME Y14.5M-2009	SIZE B	SYSTEM NX	DWG NO. J-R4-10-501	SCALE 1:1
	DRAWN BY SAK/DMS	DATE 19NOV2024	SHEET 2 OF 5	

6

5

4

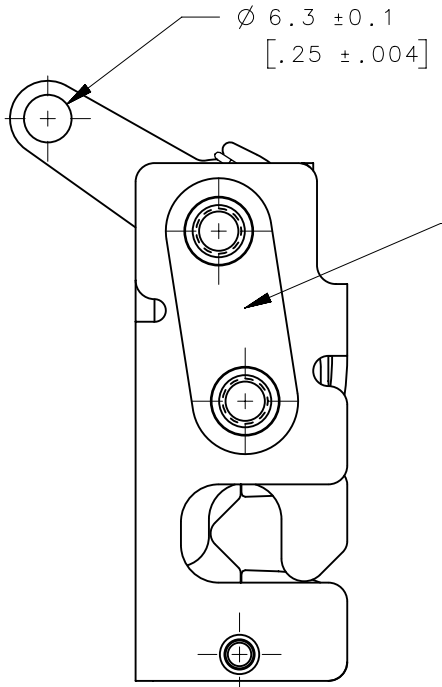
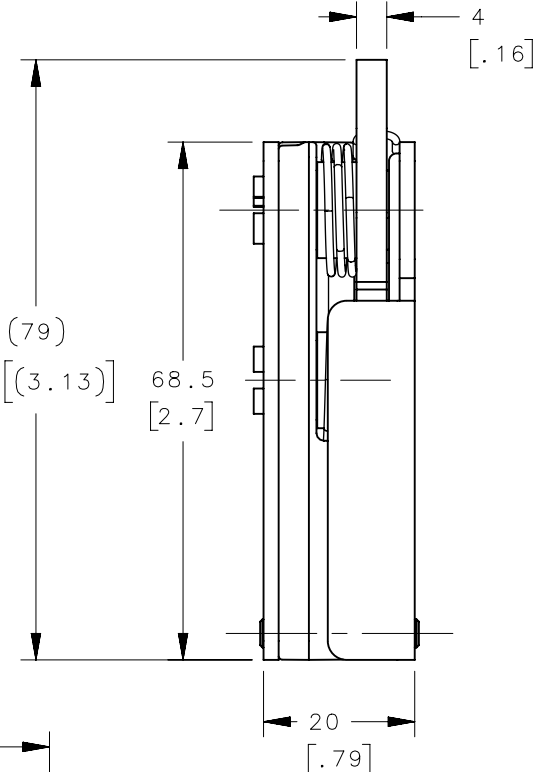
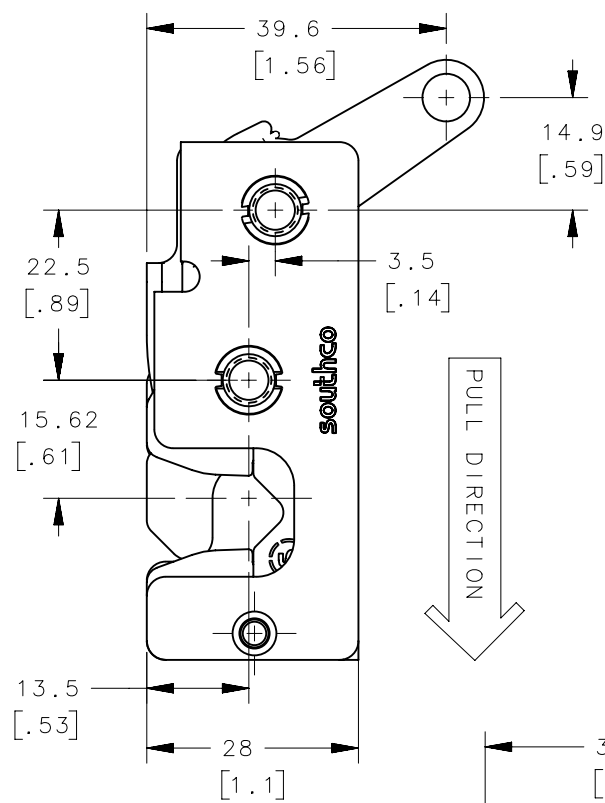
3

2

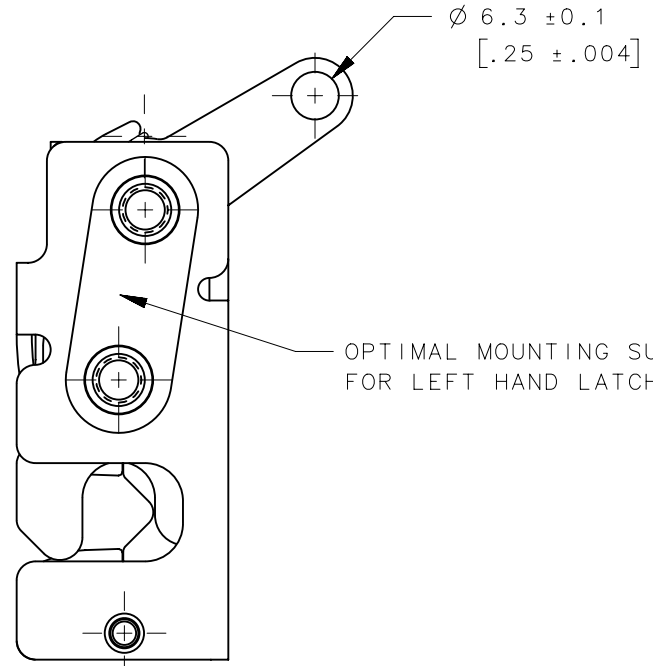
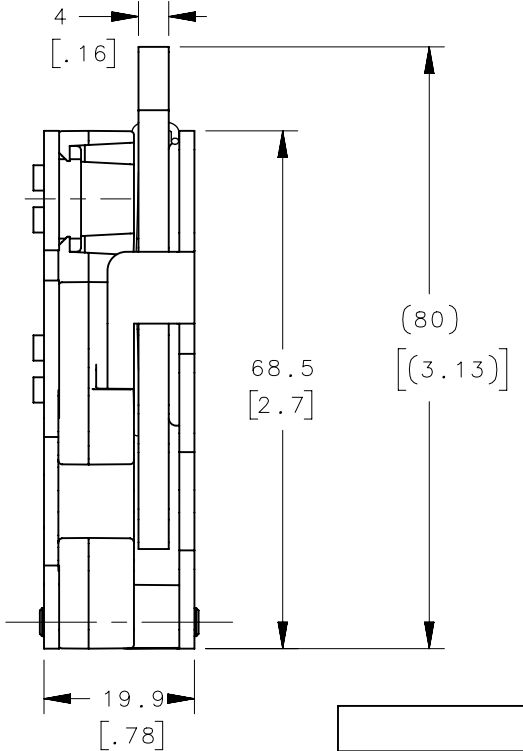
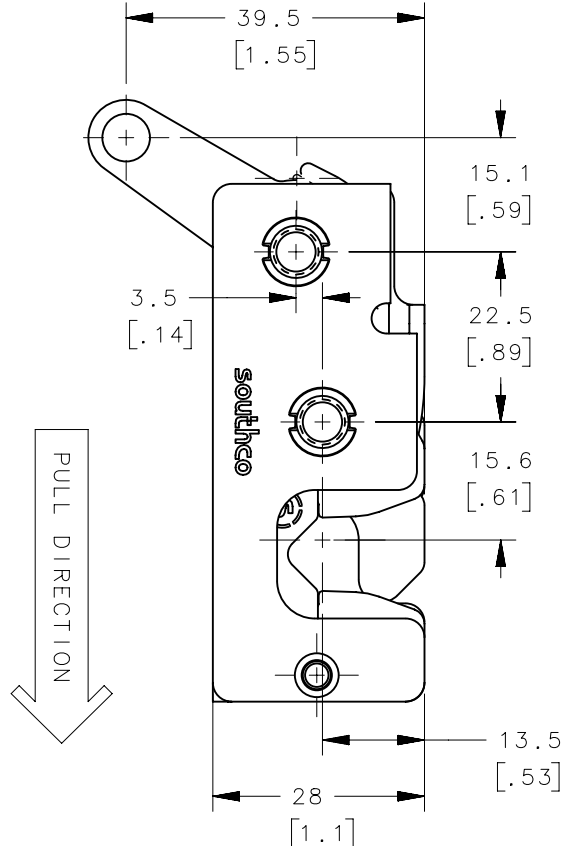
1

RIGHT HAND LATCH, INTEGRATED BUMPER
(R4-10-1X-505-XX OR R4-10-3X-505-XX)

REVISION HISTORY			
REV	DATE	BY	DESCRIPTION
A	19NOV2024	SAK/DMS	PRN:P2024-1963



OPTIMAL MOUNTING SURFACE FOR RIGHT HAND LATCH



OPTIMAL MOUNTING SURFACE FOR LEFT HAND LATCH

LEFT HAND LATCH, INTEGRATED BUMPER
(R4-10-2X-505-XX OR R4-10-4X-505-XX)

THIRD ANGLE PROJECTION MILLIMETERS [IN] TOLERANCES UNLESS OTHERWISE NOTED ALL DIMENSIONS WITHOUT TOLERANCES ARE FOR REFERENCE ONLY. PER ASME Y14.5M-2009			southco [®] CONNECT • CREATE • INNOVATE	
	DESCRIPTION R4 ROTARY LATCH BOTTOM TRIGGER, 6.3 HOLE			
	PROPRIETARY ITEM <small>EXCEPT FOR USES EXPRESSLY GRANTED IN WRITING, INFORMATION DISCLOSED HEREON IS CONFIDENTIAL AND ALL RIGHTS, PATENT AND OTHERWISE, ARE RESERVED BY SOUTHCO, INC.</small>	SIZE B	SYSTEM NX	DWG NO. J-R4-10-501
	DRAWN BY SAK/DMS	DATE 19NOV2024	SCALE 1:1	SHEET 3 OF 5

6

5

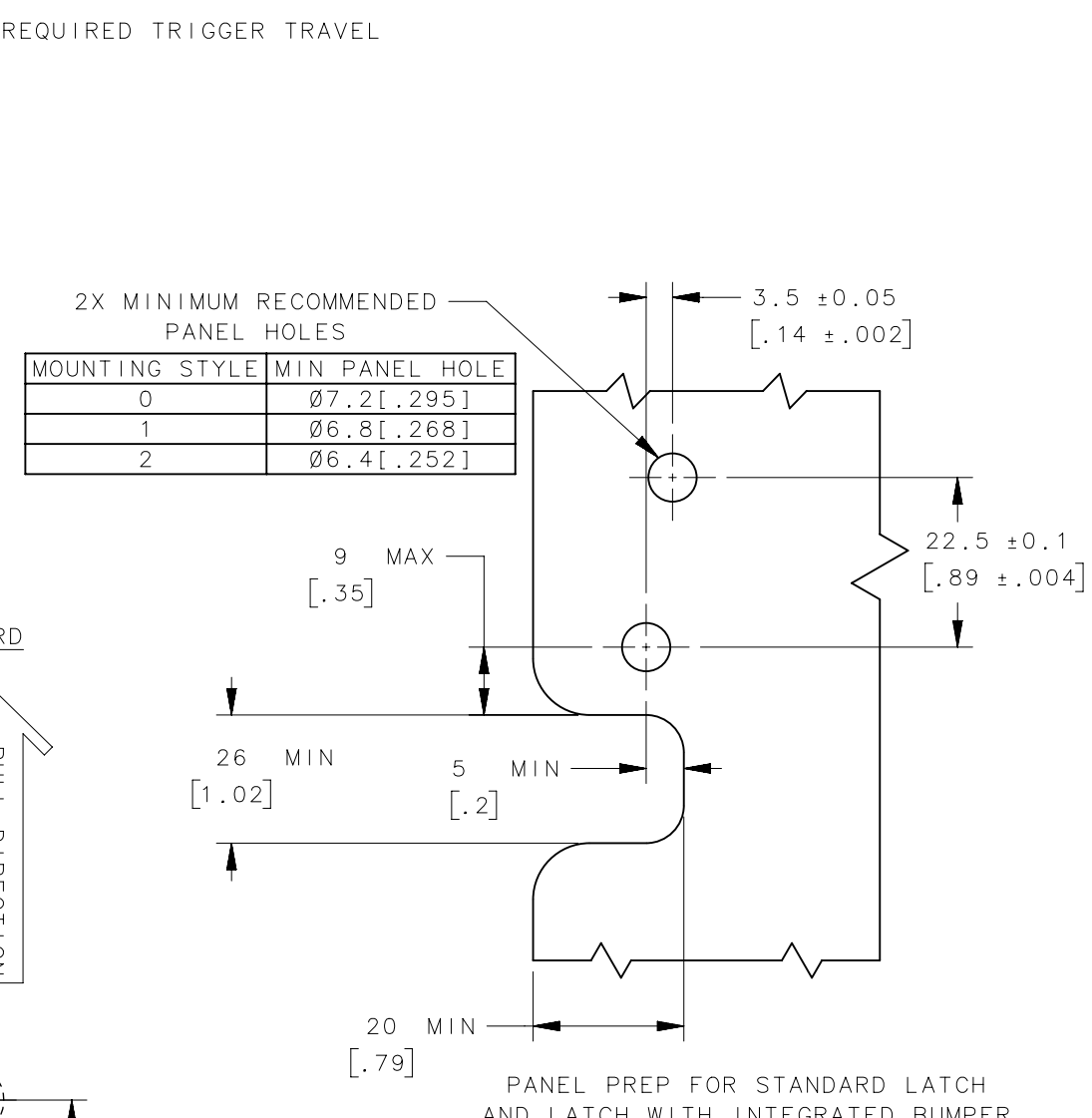
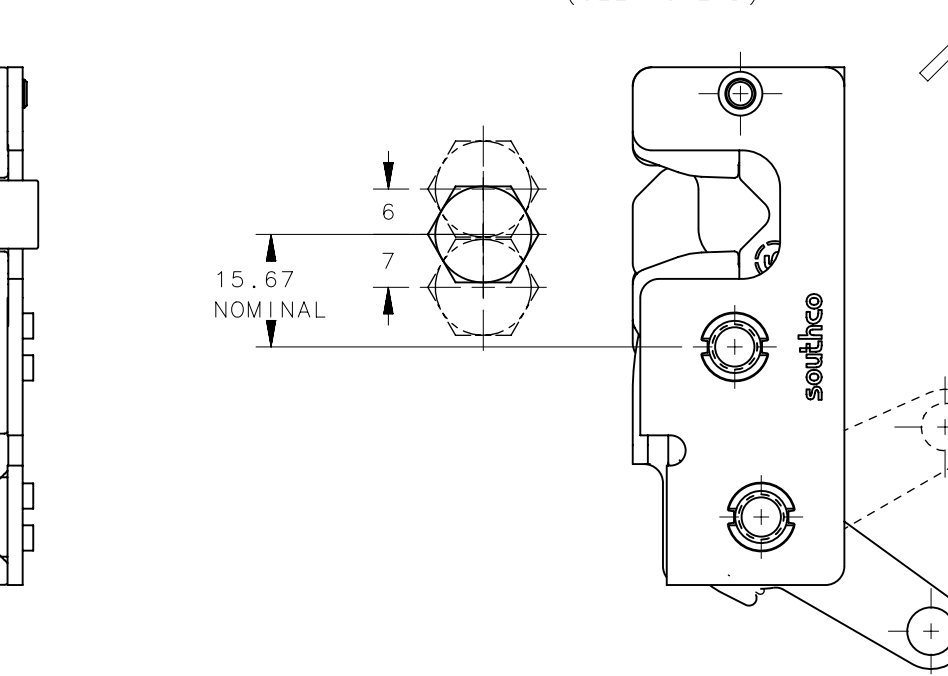
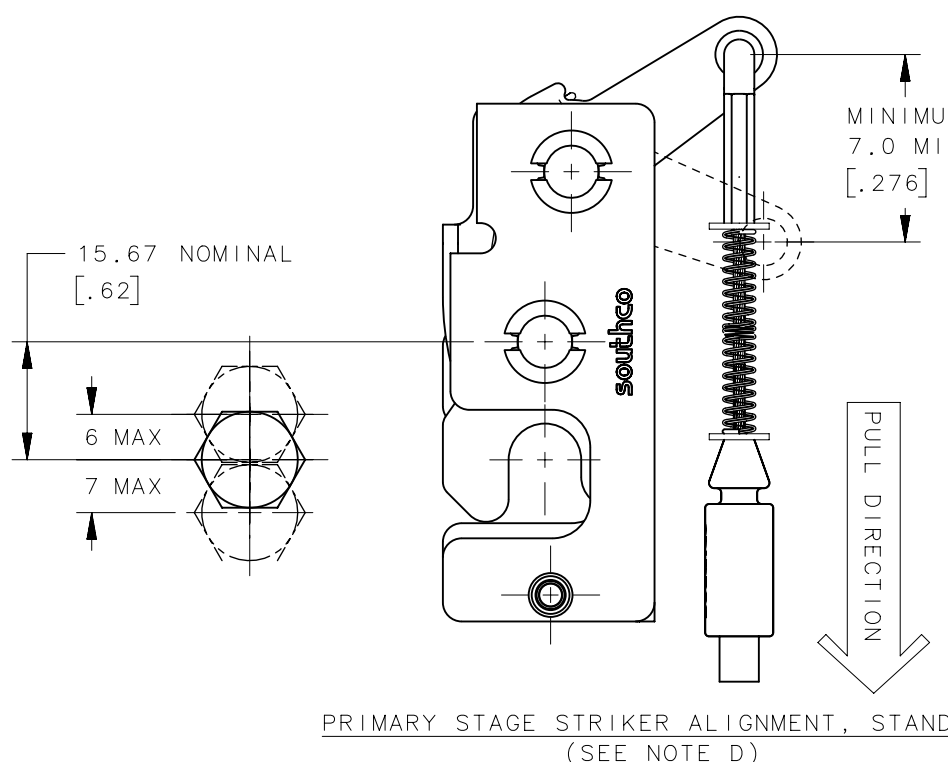
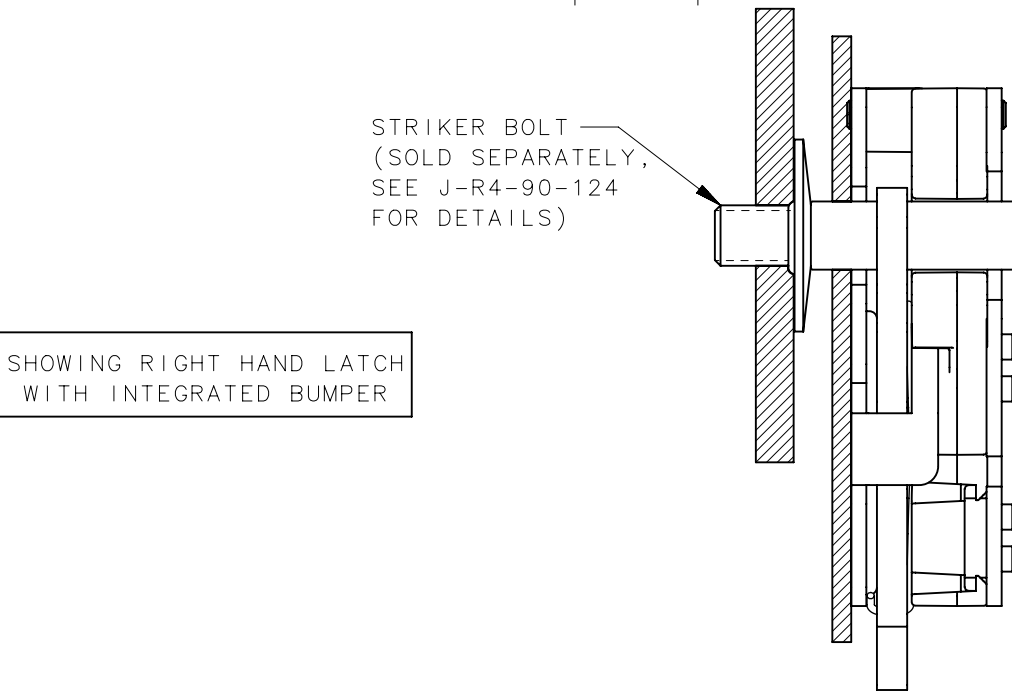
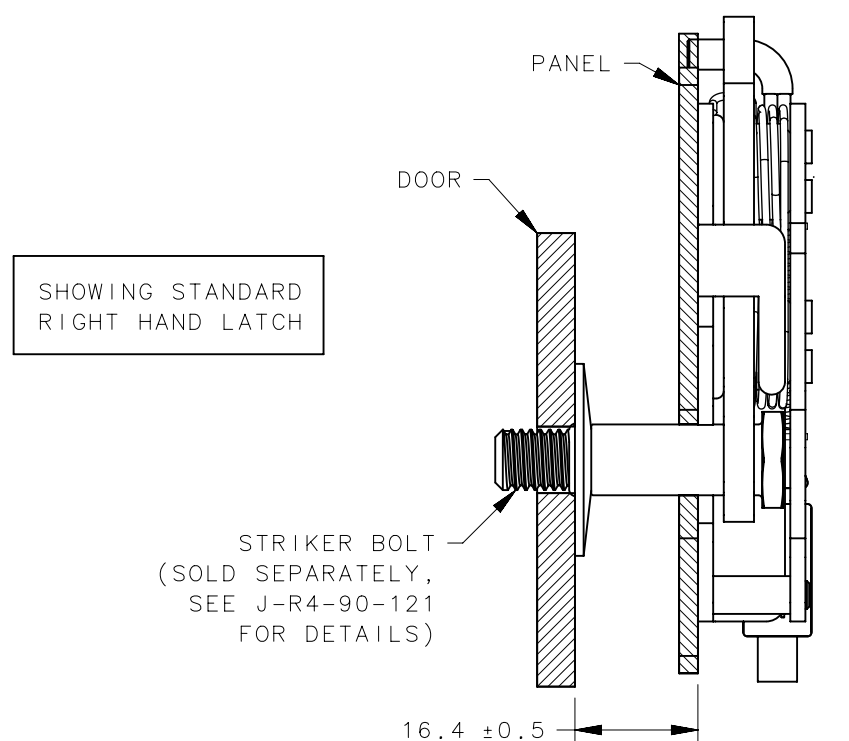
4

3

2

1

REVISION HISTORY			
REV	DATE	BY	DESCRIPTION
A	21NOV2024	SAK/DMS	PRN:P2024-1963



NON-RIGID DOOR	3.7	8.1	5.7	6.3
RIGID DOOR	0	3.6	0.3	0.3
	"A"	"B"	"A"	"B"
	STANDARD		INTEGRATED BUMPER	
CPB NUMBER	STANDARD	THIRD ANGLE PROJECTION	 CONNECT • CREATE • INNOVATE	
		MILLIMETERS [IN]		
		TOLERANCES UNLESS OTHERWISE NOTED	DESCRIPTION	
		ALL DIMENSIONS WITHOUT TOLERANCES ARE FOR REFERENCE ONLY.	R4 ROTARY LATCH BOTTOM TRIGGER, 6.3 HOLE	
PROPRIETARY ITEM			SIZE	SYSTEM
EXCEPT FOR USES EXPRESSLY GRANTED IN WRITING, INFORMATION DISCLOSED HEREON IS CONFIDENTIAL AND ALL RIGHTS, PATENT AND OTHERWISE, ARE RESERVED BY SOUTHCO, INC.			B	NX
			DWG NO.	J-R4-10-501
		PER ASME Y14.5M-2009	DRAWN BY	SAK/DMS
			DATE	21NOV2024
			SCALE	1:1
			SHEET	4 OF 5

NOTES:
 C: MINIMUM TRIGGER TRAVEL TO RELEASE THE LATCH OF 5.6 MIN [0.276]
 TRIGGER TRAVEL MINIMUM TO HARD STOP OF 31 MAX [1.22]
 D. THESE VIEWS SHOW THE MAXIMUM STRIKER MISALIGNMENT ACCEPTED BY THE LATCH FROM NOMINAL STRIKER POSITION. THEY ASSUME THE STRIKER CENTERLINE IS PERFECTLY PERPENDICULAR TO THE LATCH MOUNTING SURFACE. STRIKER MISALIGNMENT COULD BE FROM MANUFACTURING TOLERANCES OR FROM NON RIGID DOOR SYSTEMS AND THIS REPRESENTS THE MAXIMUM OF BOTH COMBINED.
 E. INTEGRATED BUMPER LATCH MUST USE R4-90-124-XX.

6

5

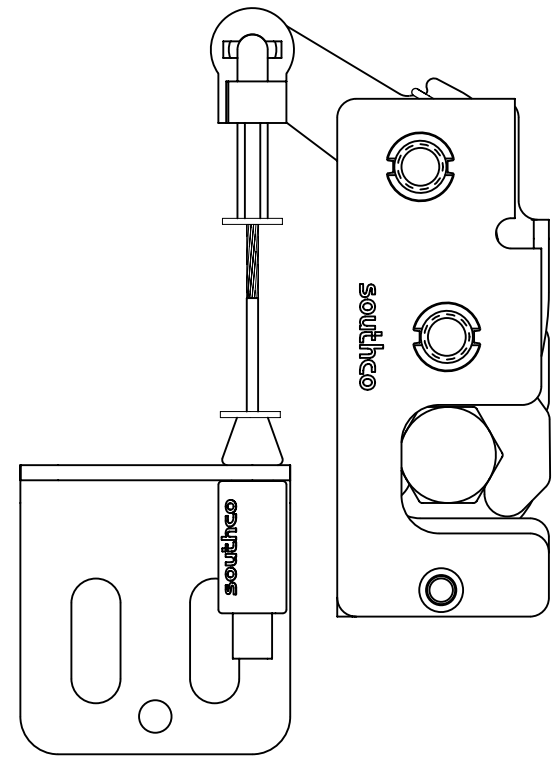
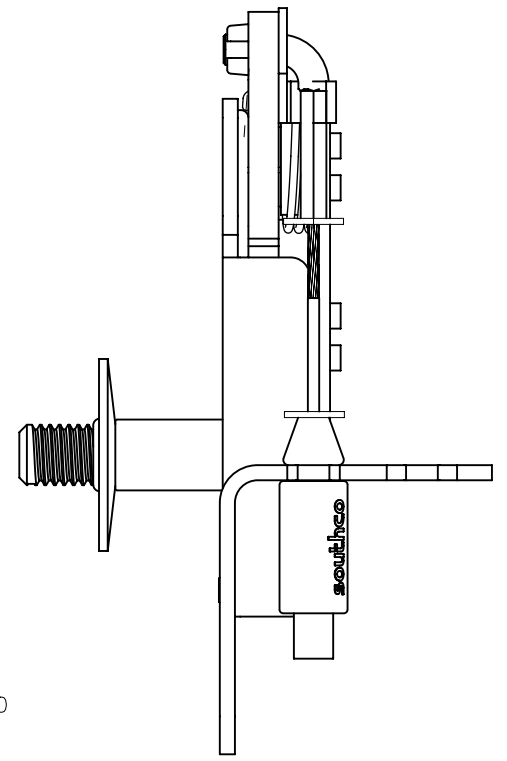
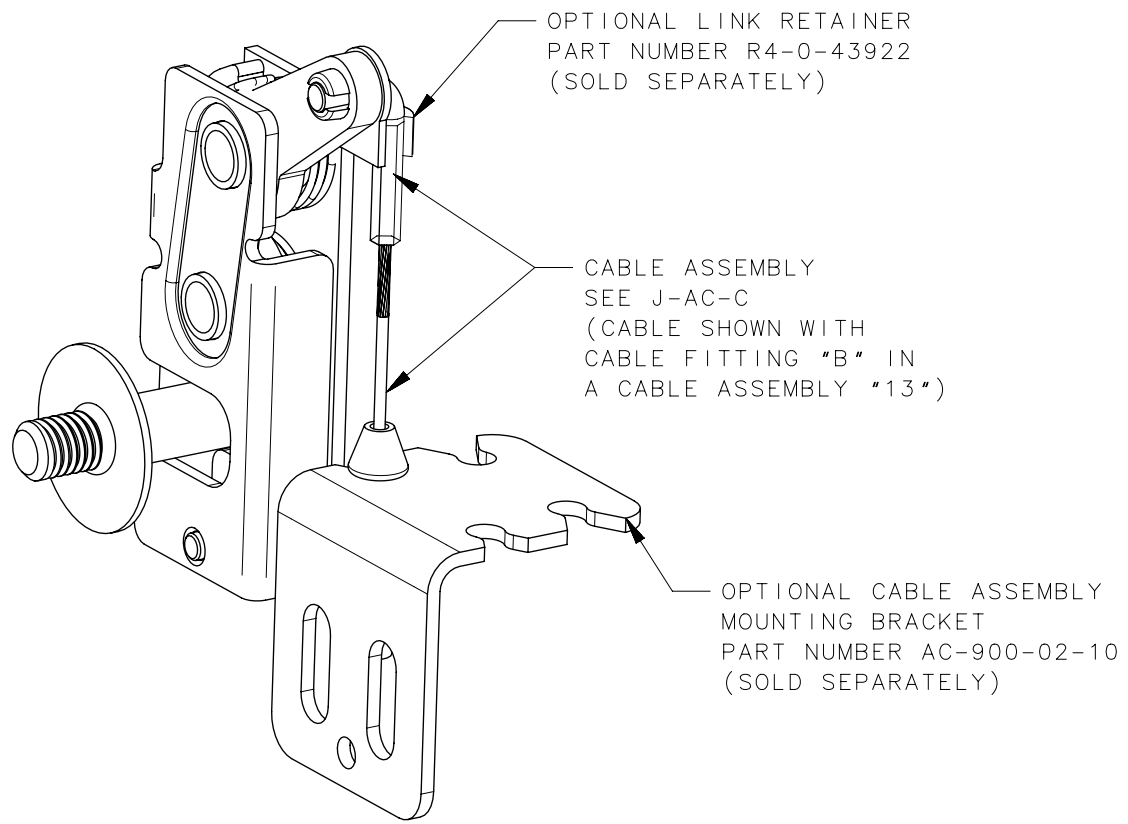
4

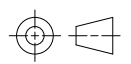

3

2

1

REVISION HISTORY			
REV	DATE	BY	DESCRIPTION
A	22NOV2024	SAK/DMS	PRN: P2024-1963



CPB NUMBER	STANDARD	THIRD ANGLE PROJECTION				 CONNECT • CREATE • INNOVATE		
CUSTOMER PART NUMBER	MILLIMETERS [IN]							
SURFACE AREA	TOLERANCES UNLESS OTHERWISE NOTED		DESCRIPTION			R4 ROTARY LATCH		
VOLUME	ALL DIMENSIONS WITHOUT TOLERANCES ARE FOR REFERENCE ONLY.		BOTTOM TRIGGER, 6.3 HOLE			SIZE	SYSTEM	DWG NO.
PROPRIETARY ITEM	PER ASME Y14.5M-2009		B	NX	J-R4-10-501			
EXCEPT FOR USES EXPRESSLY GRANTED IN WRITING, INFORMATION DISCLOSED HEREON IS CONFIDENTIAL AND ALL RIGHTS, PATENT AND OTHERWISE, ARE RESERVED BY SOUTHCO, INC.	DRAWN BY		SAK/DMS	DATE	21NOV2024	SCALE	1:1	SHEET
								5 OF 5

6

5

4

3

2

1