

NOTES:

- A. MATERIAL & FINISH:**
 HANDLE - ALUMINUM, CLEAR OR BLACK ANODIZED
 BASE - ALUMINUM, CLEAR OR BLACK ANODIZED
 BUSHING - NYLON, NATURAL
 ROLL PIN - 300 SERIES STAINLESS STEEL, PASSIVATED
 HEX NUT & LOCK WASHER - 300 SERIES STAINLESS STEEL, NATURAL
- B. COSMETIC SPECIFICATION:**
 ALL SURFACES UNLESS OTHERWISE NOTED ARE TO CONFORM TO A CLASS *B* DESIGNATION AS DESCRIBED IN SOUTHCO COSMETIC SPECIFICATION S-121-03.
- C. PACKAGING: TRAY PACKAGED**
 P9-040-40-CCD-FF-3 SHIPPED (1000) PER BOX
 P9-064-40-CCD-FF-3 SHIPPED (600) PER BOX
 P9-096-40-CCD-FF-3 SHIPPED (400) PER BOX
 P9-128-40-CCD-FF-3 SHIPPED (400) PER BOX
- FOR INDIVIDUALLY PACKAGED, (1) HANDLE IN POLYETHYLENE BAG, REMOVE -3 FROM PART NUMBER.
- D. RoHS COMPLIANT.**

southco		PROPRIETARY ITEM - EXCEPT FOR USES EXPRESSLY GRANTED IN WRITING INFORMATION DISCLOSED HEREON IS CONFIDENTIAL AND ALL RIGHTS PATENT AND OTHERWISE ARE RESERVED BY SOUTHCO, INC.	
REV	DATE	DRAWN/CHKD	DESCRIPTION
A	21APR2005	DLH	RELEASED FOR PRODUCTION
B	02SEP2005	DLH	DRAWING UPDATES
C	09JUL2007	DLH/AJH	PRN: P2007-0881
D	20DEC2011	ML	PRN: P2011-1656
E	18MAR2024	CMS/IT	PRN: P2024-0501

P9 FOLDING (INFINITE POSITION) HANDLES				DATE	DRAWN	CHKD	SCALE	DRAWING NUMBER
				29SEP2003	DLH		.5:1	J-P9

PART NUMBER: P9-AAA-40-CCD-FF-3

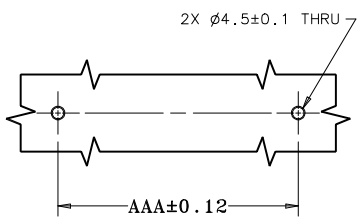
- THREAD TYPE**
 O8 = 8-32 THREAD
 M4 = M4 THREAD
- MATERIAL & FINISH**
 11 = ALUMINUM, CLEAR ANODIZED
 15 = ALUMINUM, BLACK ANODIZED
- LENGTH**
 040 = 40mm
 054 = 54mm
 064 = 64mm
 096 = 96mm
 128 = 128mm
- THREAD ORIENTATION**
 N = FOR INTERNAL THREADS
 X = FOR EXTERNAL THREADS

MILLIMETERS

ALL DIMENSIONS WITHOUT TOLERANCES ARE FOR REFERENCE ONLY.

THIRD ANGLE PROJECTION

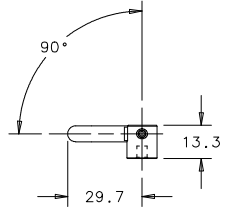
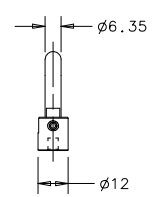
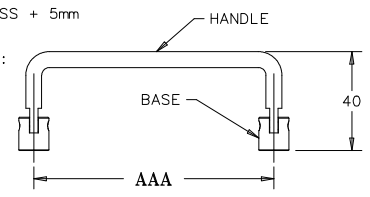
A3 PAPER SIZE



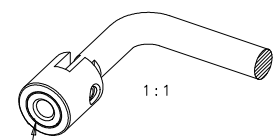
PANEL PREPARATION

INTERNAL THREADED (P9-096-40-CCN-FF-3 SHOWN)

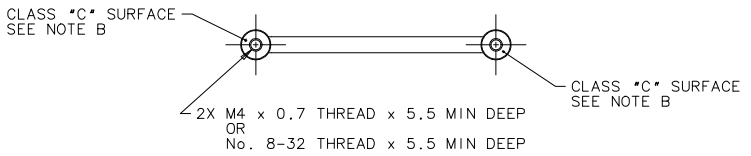
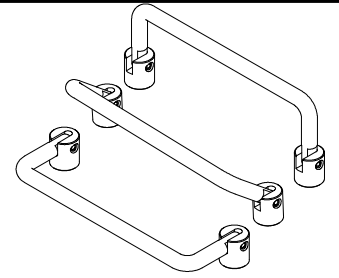
MOUNTING SCREW LENGTH = PANEL THICKNESS + 5mm
 MOUNTING SCREWS NOT INCLUDED
 RECOMMENDED MAXIMUM TIGHTENING TORQUE:
 170 N_{cm} (15 lbf_{in})



FOLD DOWN POSITION

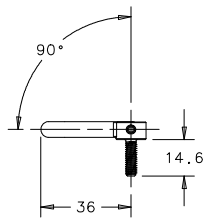
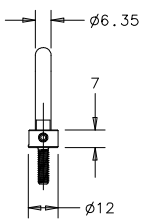
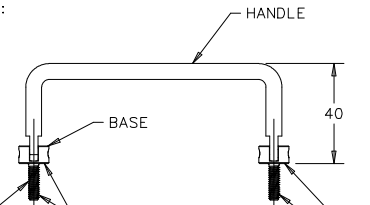


M4 THREADS WILL HAVE A GROOVED RING

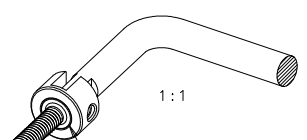


EXTERNAL THREADED (P9-096-40-CCX-FF-3 SHOWN)

PANEL THICKNESS = 8.5 MAX
 MOUNTING HARDWARE INCLUDED - (2) HEX NUTS, (2) LOCKWASHERS
 RECOMMENDED MAXIMUM TIGHTENING TORQUE:
 110 N_{cm} (10 lbf_{in})



FOLD DOWN POSITION



M4 THREADS WILL HAVE A GROOVED RING

