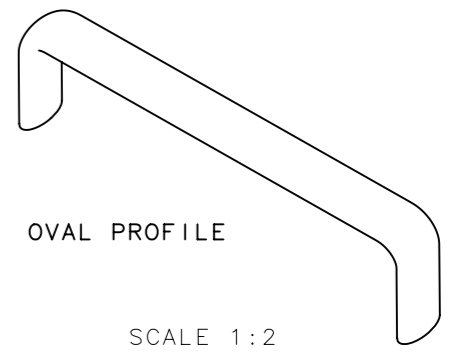
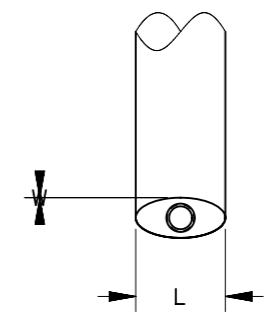
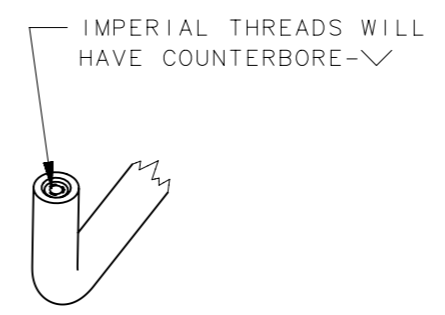
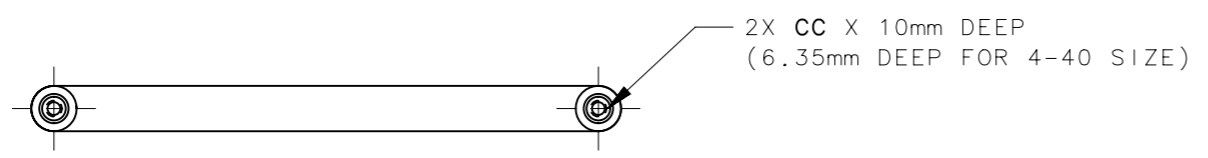
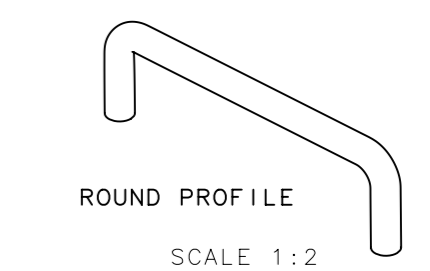
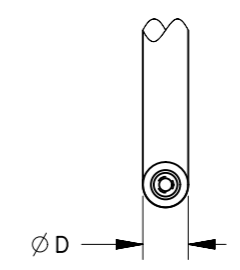
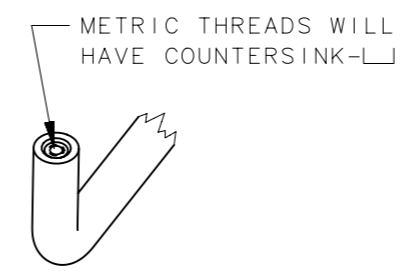
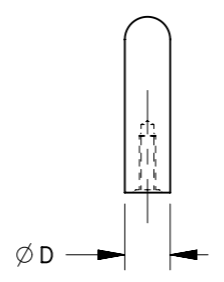
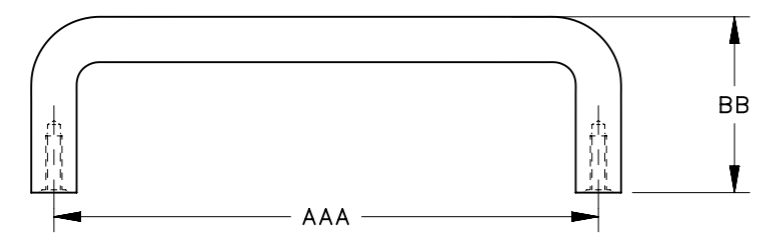
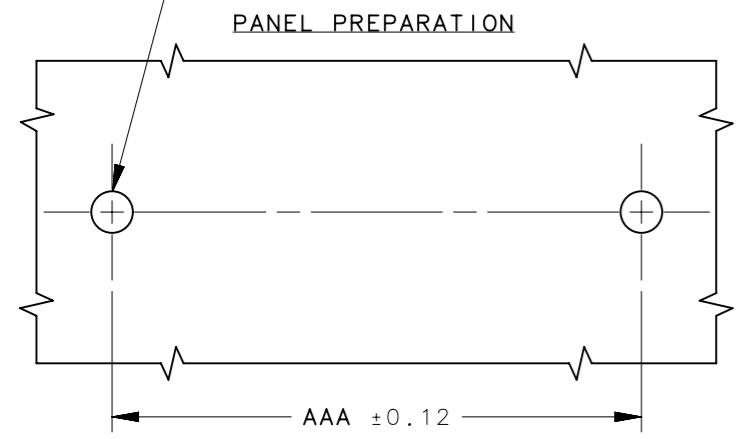


REVISION HISTORY			
REV	DATE	BY	DESCRIPTION
0	21MAY2021	CRM/DMS	PRN: P2021-0968



2X Ø3.5±0.1 THRU FOR 4-40 & M3 SCREWS
 Ø4.0±0.1 THRU FOR 6-32 SCREWS
 Ø4.5±0.1 THRU FOR 8-32 & M4 SCREWS
 Ø5.5±0.1 THRU FOR #10 & M5 SCREWS



P8-AAA-BB-CCD-EE-3				
AAA=PULL LENGTH	BB=PULL HEIGHT	CC=THREAD TYPE	D=PULL PROFILE	SEE NOTE 2
FOR EXAMPLE 30mm = 030 128mm = 128	FOR EXAMPLE 31mm = 31	ROUND PROFILE 04 = 4-40 UNC - 2B THREAD 06 = 6-32 UNC - 2B THREAD 08 = 8-32 UNC - 2B THREAD 10 = 10-32 UNF - 2B THREAD 11 = 10-24 UNC - 2B THREAD M3 = M3 X 0.5 - 6H THREAD M4 = M4 X 0.7 - 6H THREAD M5 = M5 X 0.8 - 6H THREAD	ROUND PROFILE - DIAMETER (ØD) NOTHING = 8mm ROUND PROFILE A = 6.35mm ROUND PROFILE B = 10mm ROUND PROFILE OVAL PROFILE = LENGTH X WIDTH (L X W) V = 15.8mm X 7.1mm OVAL PROFILE Q = 11.1mm X 7.1mm OVAL PROFILE	EE=MATERIAL/FINISH ROUND PROFILE 11 = ALUMINUM/CLEAR ANODIZED 15 = ALUMINUM/BLACK ANODIZED 21 = STEEL/BRIGHT CHROME 23 = STEEL/ZINC PLATED 24 = STAINLESS STEEL, PASSIVATED 27 = ALUMINIUM/ALUCHROME 31 = 6063 ALUMINUM/POWDER COATING PANTONE 285C 41 = 1215 STEEL/POWDER COATING PANTONE 285C OVAL PROFILE 11 = ALUMINUM/CLEAR ANODIZED 15 = ALUMINUM/BLACK ANODIZED

- NOTES:-
1. MOUNTING SCREWS NOT SUPPLIED(SCREW LENGTH = PANEL THICKNESS + 5mm)
 2. PACKAGING: PULLS ARE PACKAGED IN A TRAY, LAYERED. FOR INDIVIDUALLY PACKAGED,(1) PULL IN POLYETHYLENE BAG, REMOVE THE -3 SUFFIX IN THE PART NUMBER.
 3. RECOMMENDED MAXIMUM TIGHTEN TORQUE: 170 N_{cm} (15 lbf_{in})
 4. COSMETIC SPECIFICATION: ALL SURFACES UNLESS OTHERWISE NOTED ARE CONFORM TO A CLASS "B" DESIGNATION AS DESCRIBED IN SOUTHCO COSMETIC SPECIFICATION. S-121-06 FOR ANODIZED FINISH
 5. COSMETIC SPECIFICATION: ALL SURFACES UNLESS OTHERWISE NOTED ARE CONFORM TO A CLASS "C" DESIGNATION AS DESCRIBED IN SOUTHCO COSMETIC SPECIFICATION. S-121-05 FOR STAINLESS STEEL PARTS,S-121-01 FOR CHROME PLATING,S-121-02 FOR ZINC PLATING AND S-121-03 FOR POWDER COATING.
 6. HANDLES ARE RoHS COMPLIANT.
 7. FOR AAA=076 THE REAL LENGTH IS 76.2
 8. CHROME AND ZINCE FINISH IS ALLOWED TO USE SCREW TO INSPECT THREAD HOLE.

THIRD ANGLE PROJECTION		southco [®] CONNECT · CREATE · INNOVATE	
MILLIMETERS [IN]			
SURFACE AREA		TOLERANCES UNLESS OTHERWISE NOTED	
VOLUME		DESCRIPTION P8 WIRE PULLS	
PROPRIETARY ITEM <small>EXCEPT FOR USES EXPRESSLY GRANTED IN WRITING, INFORMATION DISCLOSED HEREON IS CONFIDENTIAL AND ALL RIGHTS, PATENT AND OTHERWISE, ARE RESERVED BY SOUTHCO, INC.</small>		SIZE A3	SYSTEM NX
PER ASME Y14.5M-1994		DWG NO. J-P8-1	SCALE 0.75:1
		DRAWN BY DLH	DATE 21AUG2004
		SHEET 1 OF 1	