

PART NUMBER: E5-6-WW X-YY Z

ACTUATION STYLE
(SEE BELOW)

MATERIAL AND FINISH:

- 2 = DIE CAST ZINC, BRIGHT CHROME PLATE.
- 3 = GLASS FILLED NYLON, BLACK.
- 5 = DIE CAST ZINC, BLACK POWDER COAT.
- 6 = DIE CAST ZINC, LIGHT GREY POWDER COAT.
- 23 = 304 STAINLESS STEEL, NATURAL.
- 24 = 304 STAINLESS STEEL, PASSIVATED.
- 26 = 316 STAINLESS STEEL, NATURAL.
- 27 = 316 STAINLESS STEEL, PASSIVATED.

CAM TYPE
(SEE GRIP TABLE, SHEET 2)

SEALING OPTION:
0 = NO SEALING
(FOR YY=51 AND 52 ONLY)
1 = O-RING AND
GASKET INCLUDED

REVISION HISTORY

REV	DATE	BY	DESCRIPTION
A	30JUN2021	SSW/DMS	PRN: P2021-1277

MATERIAL AND FINISH:

DIE CAST ZINC VERSION:

1. HOUSING: DIE CAST ZINC, CHROME PLATED OR BLACK PC
2. DRIVE STUD: DIE CAST ZINC, CHROME PLATED OR BLACK PC
3. CAM: STEEL, ZINC PLATE WITH BRIGHT CHROMATE
4. MOUNTING NUT: DIE CAST ZINC
5. CAM MOUNTING SCREW: LOW CARBON STEEL, ZINC PLATE, BRIGHT CHROMATE
6. INTERNAL SPRING: STEEL, ZINC PLATE, BRIGHT CHROMATE

PLASTIC VERSION:

1. HOUSING: GLASS FILLED NYLON, BLACK
2. DRIVE STUD: GLASS FILLED NYLON, BLACK
3. CAM: STEEL, ZINC PLATE WITH BRIGHT CHROMATE
4. MOUNTING NUT: DIE CAST ZINC
5. CAM MOUNTING SCREW: LOW CARBON STEEL, ZINC PLATE, BRIGHT CHROMATE
6. INTERNAL SPRING: STEEL, ZINC PLATE, BRIGHT CHROMATE

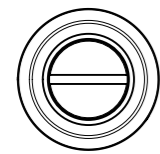
STAINLESS STEEL VERSION:

1. HOUSING: 304 AND 316, PASSIVATED
2. DRIVE STUD: 304 AND 316, PASSIVATED
3. CAM: 304 AND 316, PASSIVATED
4. MOUNTING NUT: 316, PASSIVATED
5. CAM MOUNTING SCREW: 316, PASIVATED
6. INTERNAL SPRING: 316, PASIVATED

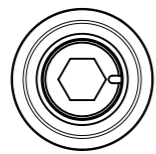
ALL VERSIONS:

1. O-RING: NITRILE, BLACK
2. SEALING WASHER: POLYURETHANE, BLACK

WW ACTUATION STYLES:



SLOTTED
WW=00



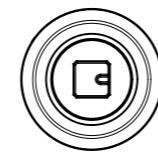
HEX RECESS 8mm
WW=01



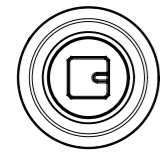
TRIANGULAR 7mm
WW=02



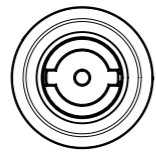
TRIANGULAR 8mm
WW=03



SQUARE 7mm
WW=04



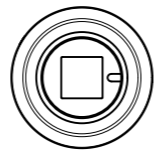
SQUARE 8mm
WW=05



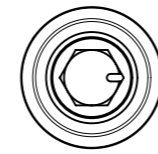
DOUBLE BIT 3mm
WW=06



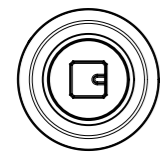
DOUBLE BIT 5mm
WW=07



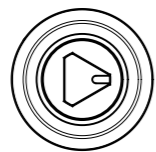
8mm SQUARE RECESS
WW=08



BELLCORE 216
WW=13



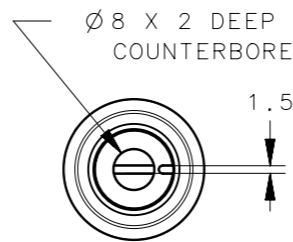
SQUARE 6mm
WW=14



TRIANGULAR 9mm
WW=15



BELLCORE
ELECTRONICS KEY
WW=19



RECESSED SLOT
SLOT DEPTH: 2
WW=21



RAILWAY STANDARD
WW=22

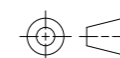
Ø 8 X 2 DEEP
COUNTERBORE

1.5

NOTES:

1. SEE SHEET 3 FOR INSTALLATION INSTRUCTIONS.
2. COSMETIC SPECIFICATION: ALL SURFACES CONFORM TO A CLASS "D" DESIGNATION AS DESCRIBED IN SOUTHCO COSMETIC SPECIFICATIONS:
S-121-01 FOR X = 2
S-121-04 FOR X = 3
S-121-03 FOR X = 5 OR X = 6
3. FOR PUSH TO CLOSE CAM ASSEMBLIES, SEE DRAWING J-E5-51-A.

THIRD ANGLE
PROJECTION



MILLIMETERS [IN]

TOLERANCES UNLESS OTHERWISE NOTED

ALL DIMENSIONS WITHOUT
TOLERANCES ARE FOR
REFERENCE ONLY.

PER ASME Y14.5M-1994

southco[®]
CONNECT • CREATE • INNOVATE

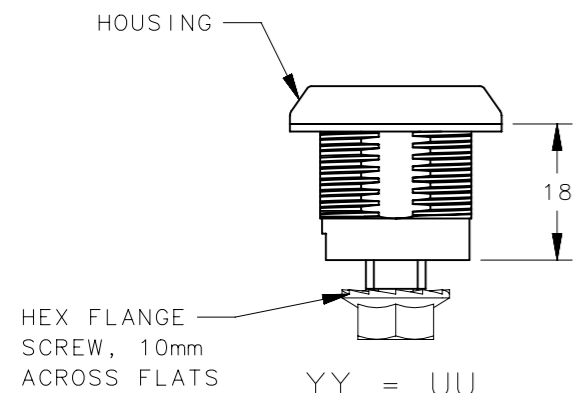
DESCRIPTION
E5 QUAD LATCH (TOOL SECURED)
M22 X 23 HOUSING

SIZE A3 SYSTEM NX DWG NO. J-E5-6-T

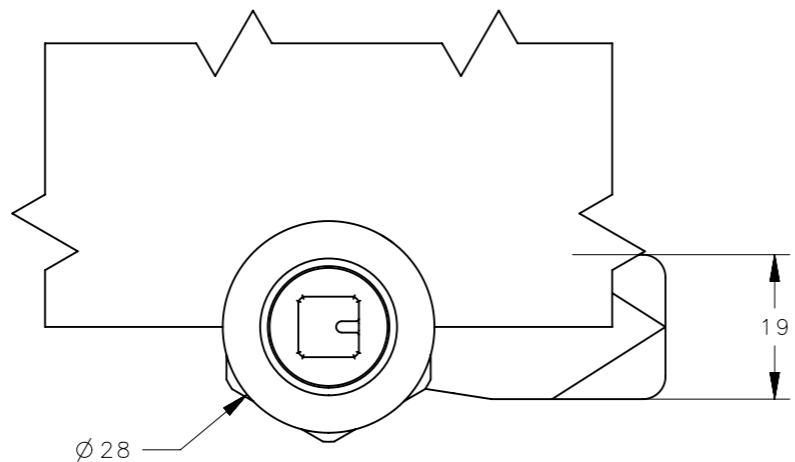
DRAWN BY JSS DATE 09JAN2009 SCALE 1:1 SHEET 1 OF 3

PROPRIETARY ITEM
EXCEPT FOR USES EXPRESSLY GRANTED
IN WRITING, INFORMATION DISCLOSED
HEREON IS CONFIDENTIAL AND ALL
RIGHTS, PATENT AND OTHERWISE,
ARE RESERVED BY SOUTHCO, INC.

YY CAM STYLE:

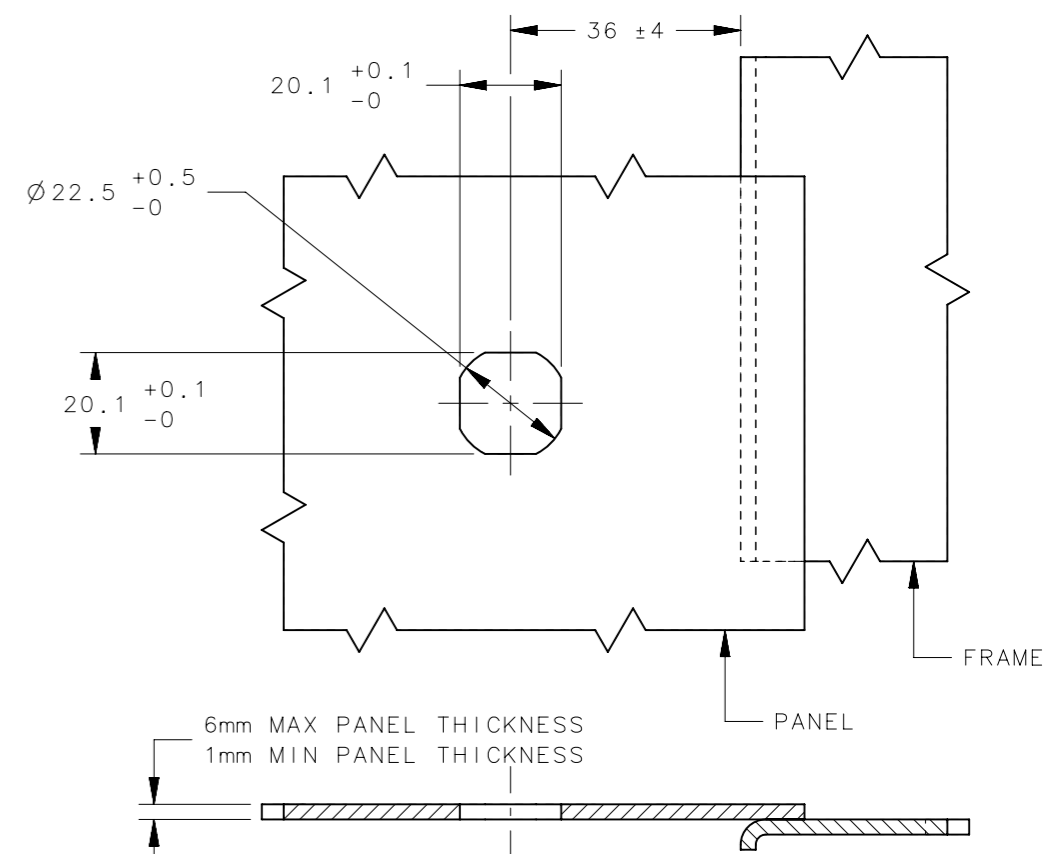


CAM ORDERED AND SHIPPED SEPARATELY



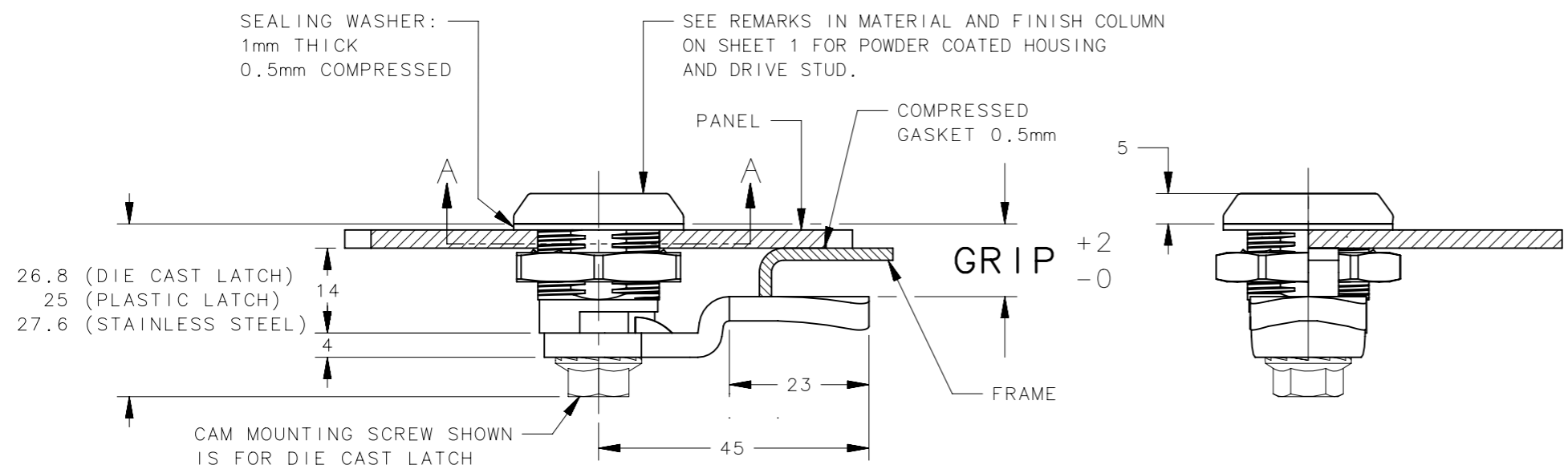
REVISION HISTORY			
REV	DATE	BY	DESCRIPTION
A	30JUN2021	SSW/DMS	PRN: P2021-1277

PANEL PREPARATION:

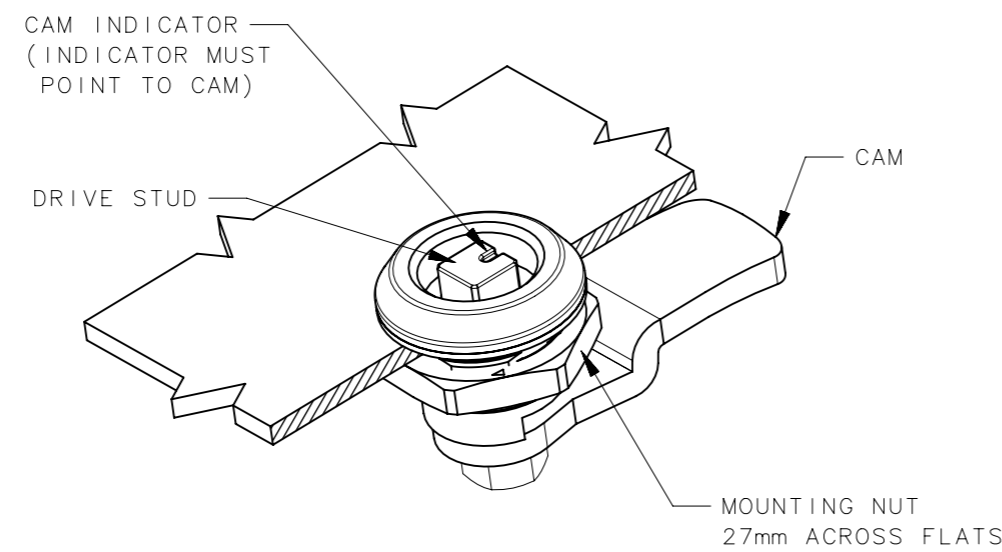


YY = ASSEMBLIES SHIPPED WITH CAM (NOT STOCKED)

YY	GRIP
22	42mm
21	40mm
20	38mm
19	36mm
18	34mm
17	32mm
16	30mm
15	28mm
14	26mm
13	24mm
12	22mm
11	20mm
10	18mm
09	16mm
08	14mm
07	12mm
06	10mm
05	8mm
04	6mm
03	4mm



PART NUMBER E5-6-05X-071 SHOWN



THIRD ANGLE PROJECTION				southco [®] CONNECT • CREATE • INNOVATE		
TOLERANCES UNLESS OTHERWISE NOTED		DESCRIPTION E5 QUAD LATCH (TOOL SECURED) M22 X 23 HOUSING				
ALL DIMENSIONS WITHOUT TOLERANCES ARE FOR REFERENCE ONLY.		SIZE A3	SYSTEM NX	DWG NO. J-E5-6-T		
PER ASME Y14.5M-1994		DRAWN BY JSS	DATE 09JAN2009	SCALE 1:1	SHEET 2 OF 3	

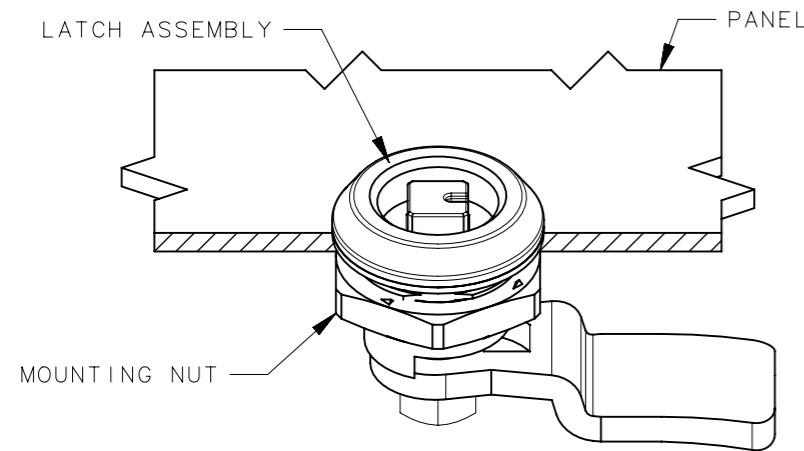
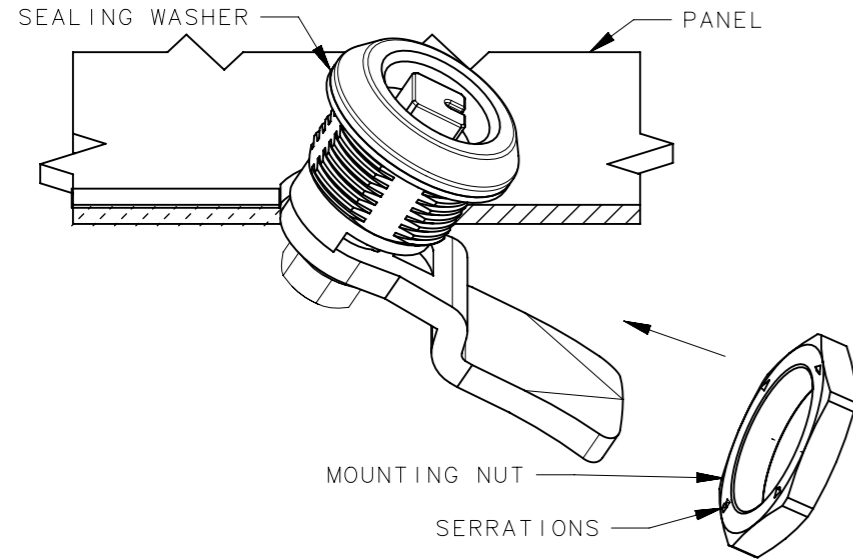
PROPRIETARY ITEM
EXCEPT FOR USES EXPRESSLY GRANTED IN WRITING, INFORMATION DISCLOSED HEREON IS CONFIDENTIAL AND ALL RIGHTS, PATENT AND OTHERWISE, ARE RESERVED BY SOUTHCO, INC.

REVISION HISTORY			
REV	DATE	BY	DESCRIPTION
A	30JUN2021	SSW/DMS	PRN: P2021-1277

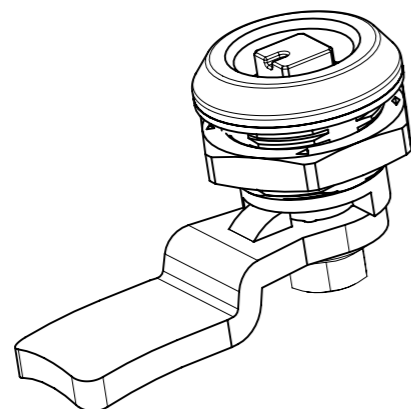
INSTALLATION METHOD 1

USE WHEN GRIP IS EQUAL TO OR EXCEEDS PANEL THICKNESS BY 9mm.

1. PLACE SEALING WASHER ONTO LATCH HOUSING.
2. TILT LATCH THROUGH MOUNTING HOLE.
3. INSTALL MOUNTING NUT AND TIGHTEN TO:
 - 10 N-m MAX (ZINC VERSION)
 - 4.25 N-m MAX (PLASTIC VERSION)
 - 20 N-m MAX (STAINLESS STEEL VERSION)



PART NUMBER E5-6-05X-131 SHOWN

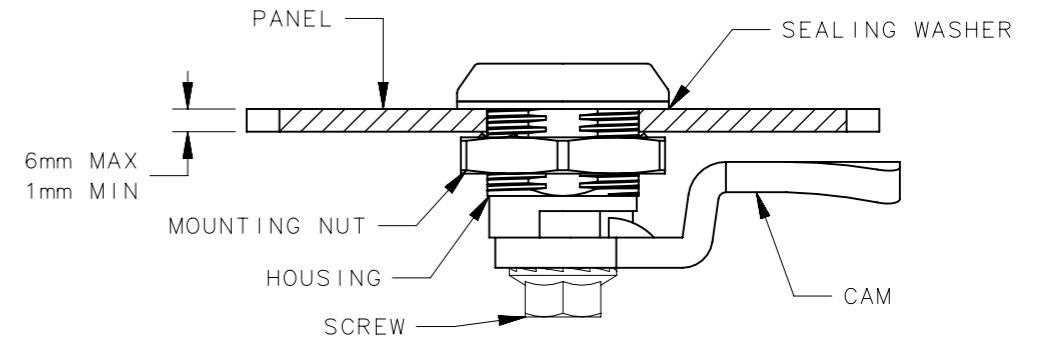
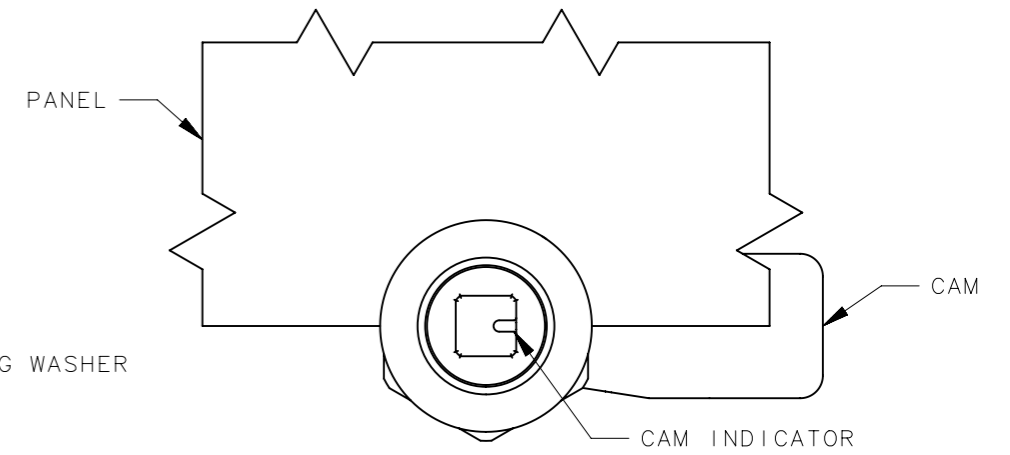
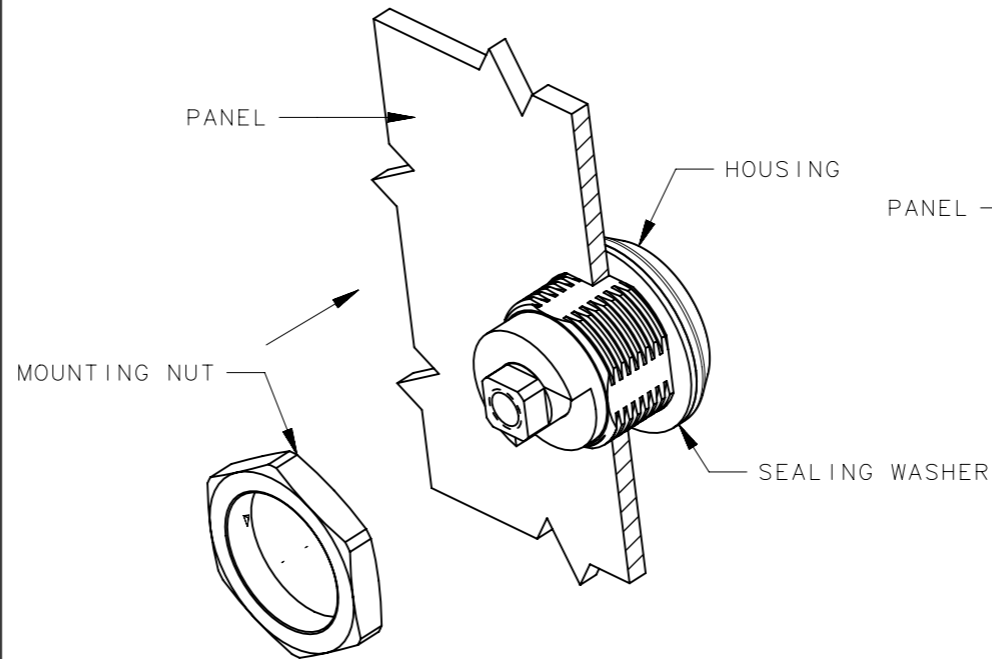


INSTALLATION METHOD 2

REQUIRED WHEN GRIP DOES NOT EXCEED PANEL THICKNESS BY 9mm.
ROLLER CAMS: OPTIONAL

1. REMOVE SCREW FROM HOUSING, DETACHING CAM FROM LATCH ASSEMBLY.
2. PLACE SEALING WASHER ONTO LATCH HOUSING AND PLACE THROUGH MOUNTING HOLES.
3. INSTALL MOUNTING NUT AND TIGHTEN TO:
 - 10 N-m MAX (ZINC VERSION)
 - 4.25 N-m MAX (PLASTIC VERSION)
 - 20 N-m MAX (STAINLESS STEEL VERSION)
4. RE-ATTACH CAM TO LATCH ASSEMBLY, ASSURE THAT CAM INDICATOR POINTS TO CAM LOCATION.
5. INSTALL SCREW AND TIGHTEN TO 4.5 Nm MIN / 5.5 Nm MAX.
 - 5 N-m MAX (ZINC VERSION)
 - 3.1 N-m MAX (PLASTIC VERSION)
 - 10 N-m MAX (STAINLESS STEEL VERSION)

FOR PUSH TO CLOSE CAMS, SEE DRAWING J-E5-51.



PART NUMBER E5-6-05X-051 SHOWN

THIRD ANGLE PROJECTION				southco [®] CONNECT • CREATE • INNOVATE	
MILLIMETERS [IN]					
TOLERANCES UNLESS OTHERWISE NOTED		DESCRIPTION			
ALL DIMENSIONS WITHOUT TOLERANCES ARE FOR REFERENCE ONLY.		E5 QUAD LATCH (TOOL SECURED) M22 X 23 HOUSING			
PROPRIETARY ITEM	PER ASME Y14.5M-1994	SIZE A3	SYSTEM NX	DWG NO. J-E5-6-T	SCALE 1:1
EXCEPT FOR USES EXPRESSLY GRANTED IN WRITING, INFORMATION DISCLOSED HEREON IS CONFIDENTIAL AND ALL RIGHTS, PATENT AND OTHERWISE, ARE RESERVED BY SOUTHCO, INC.		DRAWN BY JSS	DATE 09JAN2009	SHEET 3 OF 3	