

southco

PRELIMINARY ITEM - EXCEPT FOR USES EXPRESSLY GRANTED IN WRITING, INFORMATION DISCLOSED HEREIN IS CONFIDENTIAL AND ALL RIGHTS, PATENT AND OTHERWISE ARE RESERVED BY SOUTHCO, INC.

**SOUTHCO No. 47 CAPTIVE FASTENER
8-32 THREAD, SNAP-IN STYLE**

DATE: 24AUG93
DRAWN: JCK
CHKD:
SCALE: 2:1

DRAWING NUMBER: J-47-5-832

REV	DATE	DRAWN/CHKD	DESCRIPTION	PART NUMBER	SCREW PROJECTION		PANEL THICKNESS		B	L
					P-1	P-2	A - MIN	A - MAX		
H	24OCT2002	DLP/AJH/PRN	P20D2-D828	47-80-3X0-YZ	.04	.22				
I	03SEP2003	AAB/CHW/PRN	P20D3-D768	47-81-3X0-YZ	.11	.28	.02	.04	.08	.04
				47-82-3X0-YZ	.17	.35				
				47-83-3X0-YZ	.23	.41				
				47-80-3X2-YZ	.11	.28				
				47-81-3X2-YZ	.17	.35	.04	.08	.10	.07
				47-82-3X2-YZ	.23	.41				
				47-80-3X4-YZ	.11	.28				
				47-81-3X4-YZ	.17	.35	.08	.10	.14	.10
				47-82-3X4-YZ	.23	.41				
				47-80-3X6-YZ	.17	.35	.10	.13	.17	.13
				47-81-3X6-YZ	.23	.41				
				47-80-3X8-YZ	.23	.41	.13	.20	.24	.20

INCHES
ALL DIMENSIONS WITHOUT TOLERANCES ARE FOR REFERENCE ONLY.



MATERIAL AND FINISH
KNOB: 6000 SERIES ALUMINUM, NATURAL OR BLACK POWDER COATED
SCREW: 400 SERIES STAINLESS STEEL, PASSIVATED; OR HARDENED CARBON STEEL, ZINC PLATE, CHROMATE PLUS SEALER (SEE "Z" TABLE) (NOTE: KNOB AND TOP OF SCREW AVAILABLE WITH POWDER COATING, SEE "Y" TABLE)
FERRULE: 6000 SERIES ALUMINUM, NATURAL
SPRING: 300 SERIES STAINLESS STEEL, PASSIVATED

"Z" - KNOB TYPE AND SCREW MATERIAL

"X" - SCREW RECESS

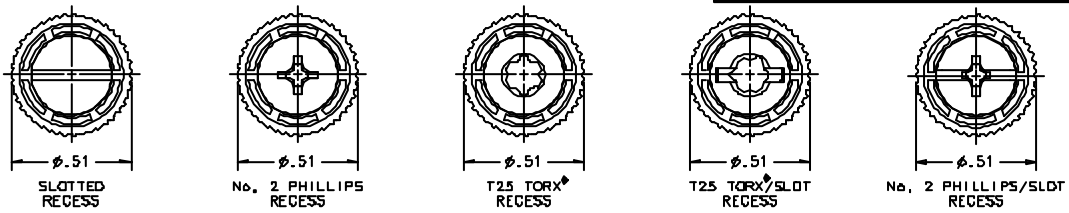
- 1 - SLOTTED
- 3 - No. 2 PHILLIPS
- 5 - T25 TORX
- 7 - T25 TORX/SLOT COMBINATION
- 9 - No. 2 PHILLIPS/SLOT COMBINATION

"Y" - FINISH ON KNOB & SCREW HEAD

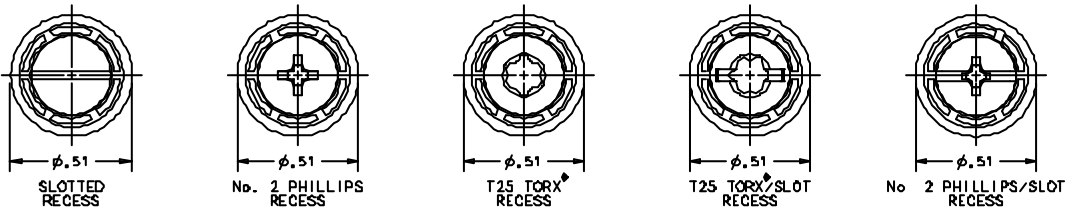
- 1 - BRIGHT
- 4 - CUSTOM COLOR, SEE J-47-0-3 FOR ADDITIONAL SUFFIX
- 5 - BLACK POWDER COATED

KNOB	SCREW MATERIAL	RECESS	
		SLOTTED PHILLIPS	TORX® TORX/SLOT PHILLIPS/SLOT
KNURLED	STAINLESS STEEL	0	N/A
SMOOTH	STAINLESS STEEL	1	N/A
KNURLED	STEEL	4	0
SMOOTH	STEEL	5	1

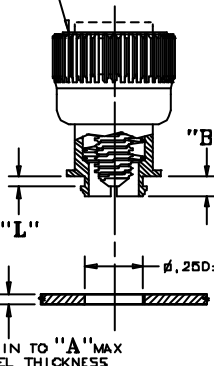
KNURLED KNOBS



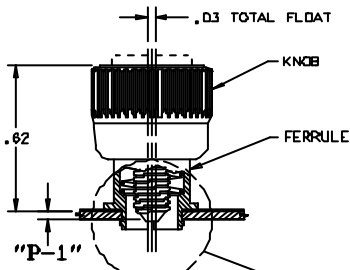
SMOOTH KNOBS



FLUSH RETRACTING SCREW ASSEMBLY SHOWN
P-1 = .04

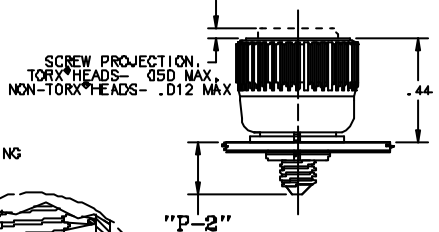


NOTE: KNOB AND SCREW ARE SPRING LOADED OUTWARD, AS SHOWN BELOW

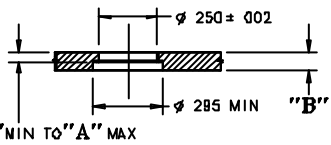


TO INSTALL FASTENER,

1. PREPARE PANEL AS SHOWN, NOTE: IF HOLES ARE DRILLED, TOP EDGE OF HOLE SHOULD BE CHAMFERED
2. SCREW ASSEMBLY CAN BE INSTALLED WITH FINGER PRESSURE FROM PUNCH SIDE OF PANEL. NOTE: ASSEMBLY MUST BE KEPT PERPENDICULAR TO PANEL WHILE SNAPPING INTO HOLE.
3. FOR INSTALLATION FORCE GUIDELINES SEE DRAWING TD-47-1D-J.

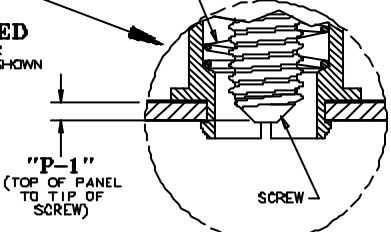


PANEL PREPARATION I
REQUIRES SPACE BETWEEN INNER AND OUTER PANELS
PART NUMBER:
47-80-3X0-Y0 SHOWN



PANEL PREPARATION II
PROVIDES A FLAT SURFACE TO PANEL CONTACT WHEN FASTENED
PART NUMBER:
47-80-3X0-Y0 SHOWN

UNFASTENED
PART NUMBER:
47-80-3X0-Y0 SHOWN



FASTENED
PART NUMBER:
47-80-3X0-Y0 SHOWN

SCALE: 4:1

TORX® IS A REGISTERED TRADEMARK OF THE CAMCAR DIVISION OF TEXTRON, INC.

DRAWING NUMBER
J-47-5-832