

southco

PROPRIETARY ITEM - EXCEPT FOR USES EXPRESSLY GRANTED IN WRITING INFORMATION DISCLOSED HEREON IS CONFIDENTIAL AND ALL RIGHTS PATENT AND OTHERWISE ARE RESERVED BY SOUTHCO, INC.

SOUTHCO No. 47 CAPTIVE FASTENER
10-32 THREAD, PRESS-IN STYLE

DATE 16JUN94
DRAWN JDK
CHKD
SCALE 2 : 1

DRAWING NUMBER
J-47-3-132

REV.	DATE	DRAWN	REVISION
H	23APR2002	PS-AJH	PRN: P2002-0237

PART NUMBER	SCREW PROJECTION		*T*
	P1	*P2*	
47-60-5X1-YZ	.03	.22	.66
47-61-5X1-YZ	.09	.28	.73
47-62-5X1-YZ	.15	.34	.79
47-63-5X1-YZ	.21	.41	.85

PANEL THICKNESS	
A, MIN	A, MAX

DIMENSIONS IN INCHES
DIMENSIONS WITHOUT TOLERANCES ARE FOR REFERENCE ONLY



TORX® IS A REGISTERED TRADEMARK OF THE CAMCAR DIVISION OF TEXTRON, INC.

MATERIAL AND FINISH

KNOB: 6000 SERIES ALUMINUM, NATURAL.
SCREW:

FOR SLOTTED AND PHILLIPS:
400 SERIES STAINLESS STEEL, PASSIVATED.
FOR TORX® TORX®/SLOT COMBINATION
AND PHILLIPS/SLOT COMBINATION:
HARDENED CARBON STEEL; ZINC PLATE,
CHROMATE PLUS SEALER.
(NOTE: KNOB AND TOP OF SCREW AVAILABLE WITH
POWDER COATING; SEE PART NUMBER TABLE).
FERRULE: HARDENED CARBON STEEL; ZINC PLATE,
CHROMATE PLUS SEALER
SPRING: 300 SERIES STAINLESS STEEL; PASSIVATED.

***X* SCREW RECESS**

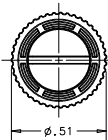
- 0- SLOTTED
- 2- No. 2 PHILLIPS
- 4- T25 TORX®
- 6- T25 TORX® SLOT
- 8- No. 2 PHILLIPS SLOT

***Y* FINISH ON KNOB & SCREW HEAD**

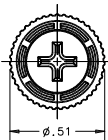
- 2- BRIGHT
- 4- CUSTOM COLOR. SEE J-47-0-3 FOR ADDITIONAL SUFFIX.
- 6- BLACK POWDER COATED

***Z* KNOB**

- 0- KNURLED
- 1- SMURLED

KNURLED KNOBS

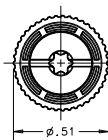
SLOTTED
WIDTH=.05
DEPTH=.05
LENGTH=.34



No. 2
PHILLIPS RECESS



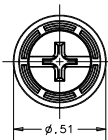
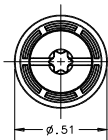
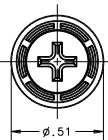
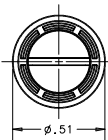
T25 .09 DEEP
TORX® RECESS



T25 TORX®/SLOT
DEPTH=.09
SLOT WIDTH=.06
SLOT DEPTH=.07
SLOT LENGTH=.29



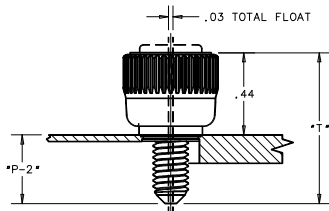
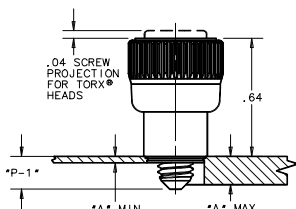
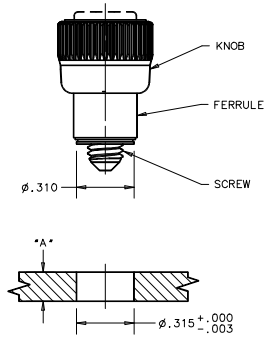
PHILLIPS/SLOT RECESS
No. 2 PHILLIPS
SLOT WIDTH=.05
SLOT DEPTH=.05
SLOT LENGTH=.34

SMOOTH KNOBS

NOTE: KNOB AND SCREW ARE SPRING LOADED OUTWARD, AS SHOWN BELOW.

TO INSTALL FASTENER

1. DRILL OR PUNCH HOLE AS SHOWN BELOW.
2. PLACE FERRULE INTO INSTALLATION HOLE.
3. PROVIDE SOLID BACK-UP BEHIND HOLE WITH CLEARANCE HOLE ϕ .205-.588 FOR SCREW.
4. PRESS ASSEMBLY IN UNTIL THE SHOULDER IS FLUSH WITH TOP OF OUTER PANEL SURFACE.



PANEL PREPARATION

UNFASTENED

FASTENED