

southco		PROPRIETARY ITEM - EXCEPT FOR USES EXPRESSLY GRANTED IN WRITING INFORMATION DISCLOSED HEREON IS CONFIDENTIAL AND ALL RIGHTS PATENT AND OTHERWISE ARE RESERVED BY SOUTHCO, INC.		SOUTHCO No. 47 CAPTIVE FASTENER 1/4-20 THREAD, PRESS-IN STYLE		DATE 16JUN94	DRAWN JGK	CHKD	SCALE 2 : 1	DRAWING NUMBER J-47-3-120
REV.	DATE	DRAWN	REVISION	PART NUMBER	SCREW PROJECTION *P1 * *P2 * *T *		PANEL THICKNESS A, MIN A, MAX		DIMENSIONS IN INCHES DIMENSIONS WITHOUT TOLERANCES ARE FOR REFERENCE ONLY	
A	06SEP95	MDM	PRN: 47-199							
B	26APR95	KGS	PRN: 47-213	47-60-6X1-YZ	.02	.28	.81			
C	15NOV96	JGK	PRN: S-1-06C	47-61-6X1-YZ	.08	.34	.87	.036		
D	30JUN99	RJB	PRN: 47-447	47-62-6X1-YZ	.15	.41	.93			
E	28AUG2001	RJB	PRN: P2001-0454	47-63-6X1-YZ	.21	.47	1.00			
F	25APR2002	JPA/DLH	PRN: P2002-0237							

TORX® IS A REGISTERED TRADEMARK OF THE CAMCAR DIVISION OF TEXTRON, INC.



MATERIAL AND FINISH

KNOB: 6000 SERIES ALUMINUM, NATURAL.
 SCREW:
 FOR SLOTTED AND PHILLIPS:
 400 SERIES STAINLESS STEEL, PASSIVATED.
 FOR TORX® TORX®/SLOT COMBINATION
 AND PHILLIPS/SLOT COMBINATION:
 HARDENED CARBON STEEL; ZINC PLATE,
 CHROMATE PLUS SEALER.
 (NOTE: KNOB AND TOP OF SCREW AVAILABLE WITH
 POWDER COATING; SEE PART NUMBER TABLE).
 FERRULE: HARDENED CARBON STEEL; ZINC PLATE,
 CHROMATE PLUS SEALER.
 SPRING: 300 SERIES STAINLESS STEEL; PASSIVATED.

"X" SCREW RECESS

- 0- SLOTTED
- 2- PHILLIPS
- 4- T30 TORX®
- 6- T30 TORX® SLOT
- 8- #2 PHILLIPS SLOT

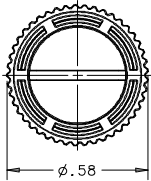
"Y" FINISH ON KNOB & SCREW HEAD

- 2- BRIGHT
- 4- CUSTOM COLOR. SEE J-47-0-3 FOR ADDITIONAL SUFFIX.
- 6- BLACK POWDER COATED

"Z" KNOB

- 0- KNURLED
- 1- SMOOTH

KNURLED KNOBS



SLOTTED
 WIDTH=.06
 DEPTH=.06
 LENGTH=.40



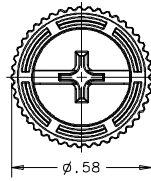
No. 2
 PHILLIPS RECESS



T30 .09 DEEP
 TORX® RECESS

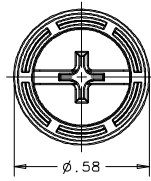
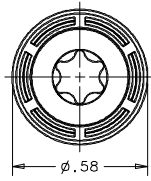
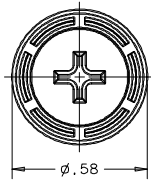
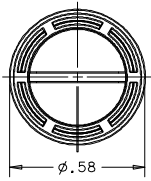


T30 TORX®/SLOT
 DEPTH=.09
 SLOT WIDTH=.07
 SLOT DEPTH=.08
 SLOT LENGTH=.36



PHILLIPS/SLOT RECESS
 No. 2 PHILLIPS
 SLOT WIDTH=.06
 SLOT DEPTH=.06
 SLOT LENGTH=.40

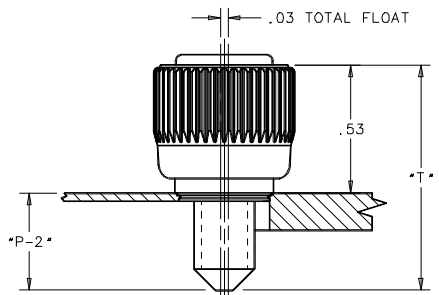
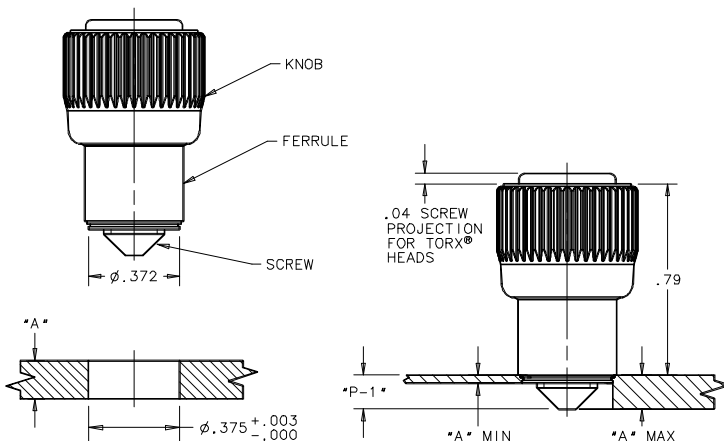
SMOOTH KNOBS



NOTE: KNOB AND SCREW ARE SPRING LOADED OUTWARD, AS SHOWN BELOW.

TO INSTALL FASTENER

1. DRILL OR PUNCH HOLE AS SHOWN BELOW.
2. PLACE FERRULE INTO INSTALLATION HOLE.
3. PROVIDE SOLID BACK-UP BEHIND HOLE WITH CLEARANCE HOLE $\phi .260 \pm .008$ FOR SCREW, $-.004$ FOR SCREW.
4. PRESS ASSEMBLY IN UNTIL THE SHOULDER IS FLUSH WITH TOP OF OUTER PANEL SURFACE.



PANEL PREPARATION

UNFASTENED

FASTENED