

| REV | DATE      | DRAWN/CHKD | DESCRIPTION     | PART NUMBER  | SCREW PROJECTION |      | PANEL THICKNESS |        | B   | L   | MILLIMETERS   |
|-----|-----------|------------|-----------------|--------------|------------------|------|-----------------|--------|-----|-----|---|
|     |           |            |                 |              | P-1              | P-2  | A, MIN          | A, MAX |     |     |   |
| A   | 13FEB2004 | DLH/AJH    | PRN: P2004-0148 | 47-80-2X0-YZ | 2.4              | 7.2  | -               | 0.8    | 2.1 | 2.9 | ALL DIMENSIONS WITHOUT TOLERANCES ARE FOR REFERENCE ONLY. |
| B   | 08MAR2004 | DLH/AJH    | PRN: P2004-0246 | 47-81-2X0-YZ | 4                | 8.8  | -               | -      | -   | -   |   |
| C   | 11OCT2007 | GDW        | PRN: P2007-1268 | 47-82-2X0-YZ | 5.6              | 10.4 | -               | -      | -   | -   |   |
|     |           |            |                 | 47-80-2X1-YZ | 2.4              | 7.2  | -               | -      | -   | -   |   |
|     |           |            |                 | 47-81-2X1-YZ | 4                | 8.8  | 0.8             | 1.6    | 2.9 | 3.7 |   |
|     |           |            |                 | 47-82-2X1-YZ | 5.6              | 10.4 | -               | -      | -   | -   |   |
|     |           |            |                 | 47-80-2X2-YZ | 4                | 8.8  | -               | -      | -   | -   |   |
|     |           |            |                 | 47-81-2X2-YZ | 5.6              | 10.4 | 1.6             | 2.4    | 3.7 | 4.5 |   |
|     |           |            |                 | 47-80-2X3-YZ | 4                | 8.8  | -               | -      | -   | -   |   |
|     |           |            |                 | 47-81-2X3-YZ | 5.6              | 10.4 | 2.4             | 3.2    | 4.5 | 5.3 |   |
|     |           |            |                 | 47-80-2X4-YZ | 5.6              | 10.4 | 3.2             | 4      | 5.3 | 6   |   |
|     |           |            |                 | 47-80-2X5-YZ | 5.6              | 10.4 | 4               | 4.8    | 6.1 | 6.8 |   |

**MATERIAL AND FINISH:**  
 KNOB: 6000 SERIES ALUMINUM, NATURAL OR BLACK POWDER COATED  
 SCREW: 400 SERIES STAINLESS STEEL, PASSIVATED; OR HARDENED CARBON STEEL, ZINC PLATE, CHROMATE PLUS SEALER (SEE "Z" TABLE)  
 (NOTE: KNOB AND TOP OF SCREW AVAILABLE WITH POWDER COATING; SEE "Y" TABLE)  
 FERRULE: 6000 SERIES ALUMINUM, NATURAL  
 SPRING: 300 SERIES STAINLESS STEEL, PASSIVATED  
 WASHER: 300 SERIES STAINLESS STEEL, PASSIVATED

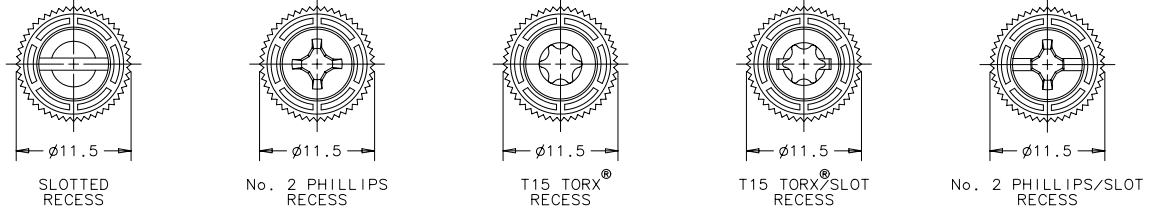
- "X" SCREW RECESS**
- 1 - SLOTTED
  - 3 - No. 2 PHILLIPS
  - 5 - T15 TORX
  - 7 - T15 TORX/SLOT COMBINATION
  - 9 - No. 2 PHILLIPS/SLOT COMBINATION

- "Y" FINISH ON KNOB & SCREW HEAD**
- 1 - BRIGHT
  - 4 - CUSTOM COLOR. SEE J-47-0-3 FOR ADDITIONAL SUFFIX
  - 5 - BLACK POWDER COATED

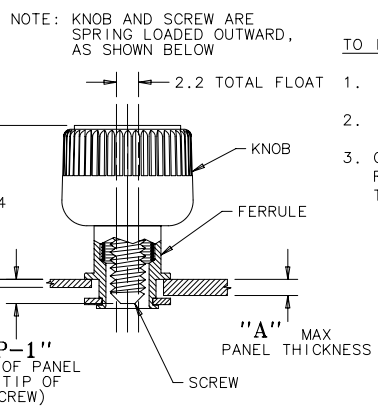
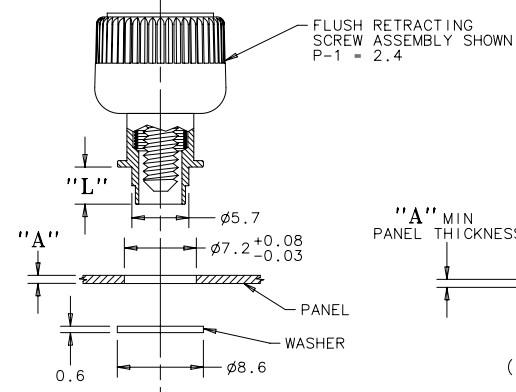
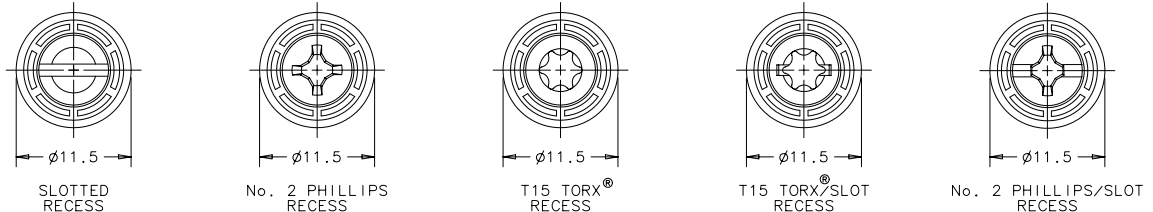
| KNOB    | SCREW MATERIAL  | RECESS                     |           |
|---------|-----------------|----------------------------|-----------|
|         |                 | SLOTTED TORX PHILLIPS/SLOT | TORX/SLOT |
| KNURLED | STAINLESS STEEL | 0                          | N/A       |
| SMOOTH  | STAINLESS STEEL | 1                          | N/A       |
| KNURLED | STEEL           | 4                          | 0         |
| SMOOTH  | STEEL           | 5                          | 1         |

"Z" KNOB TYPE AND SCREW MATERIAL

**KNURLED KNOBS**

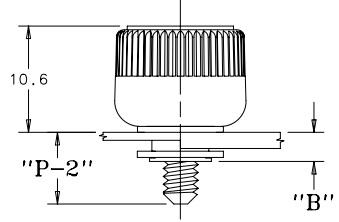


**SMOOTH KNOBS**

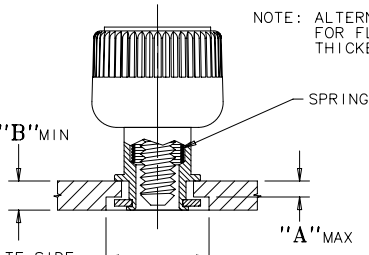


**TO INSTALL FASTENER:**

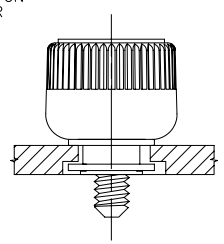
1. DRILL OR PUNCH HOLE AS SHOWN BELOW.
2. PLACE FERRULE INTO INSTALLATION HOLE.
3. CENTER TOOL ON THE SCREW THREAD, THEN ROLL FERRULE OVER WASHER TO CAPTIVATE THE ASSEMBLY.



**UNFASTENED**  
PART NUMBER: 47-80-2X1-Y0 SHOWN



**FASTENED**  
PART NUMBER: 47-80-2X1-Y0 SHOWN



**PANEL PREPARATION**  
PART NUMBER: 47-80-2X1-Y0 SHOWN

COUNTERBORE OPPOSITE SIDE OF PANEL  $\phi 10.3$  MIN, LEAVING THICKNESS OF "A" MAX

TORX® IS A REGISTERED TRADEMARK OF THE CAMCAR DIVISION OF TEXTRON, INC.