

southco

PROPRIETARY ITEM - EXCEPT FOR USES EXPRESSLY GRANTED IN WRITING, INFORMATION DISCLOSED HEREON IS CONFIDENTIAL AND ALL RIGHTS, PATENT AND OTHERWISE ARE RESERVED BY SOUTHCO, INC.

NO. 47 SENTINEL™ SCREW ASSEMBLY
FLARE-IN STYLE, M5/10-32 THREAD SIZE

DATE: 15NOV96
DRAWN: MDM
CHKD: JSS
SCALE: 2:1

DRAWING NUMBER: J-47-1-52-1

REV	DATE	DRAWN/CHKD	DESCRIPTION	PART NUMBER	PANEL THICKNESS		*B*	*L*	SCREW PROJECTION		*T*
					A MIN.	*A* MAX.			*P-1*	*P-2*	
A	31OCT97	MDM	PRN: 47-272	47-W0-5X2-Y2	1.5	3.2	0.6	1.8	1.4	6.2	19.05
B	19MAR98	MDM	PRN: 47-299	47-W1-5X2-Y2					3.1	7.9	20.62
C	01JUL99	MJS	PRN: 47-452	47-W2-5X2-Y2					4.1	8.9	22.22
D	18JUL2005	CSC/MDY	PRN: P2005-0746	47-W3-5X2-Y2	3.2	4.8	1.6	3.4	6.1	10.9	23.80
E	28MAR2006	RLR/MDY	PRN: P2006-0276	47-W0-5X4-Y2					3.1	7.9	20.62
F	07AUG2019	CMS/MGG	PRN: P2019-1984	47-W1-5X4-Y2					4.1	8.9	22.22
G	18OCT2022	CMS/PSP	PRN: P2022-1823	47-W2-5X4-Y2					6.1	10.9	23.80
				47-W2-5X6-Y2	4.8	6.4	3.2	5	4.1	8.9	22.22
				47-W3-5X6-Y2					6.1	10.9	23.80
				47-W3-5X8-Y2					6.4	7.9	4.7

MILLIMETERS
ALL DIMENSIONS WITHOUT TOLERANCES ARE FOR REFERENCE ONLY.
THIRD ANGLE PROJECTION
A3 PAPER SIZE

MATERIAL AND FINISH:

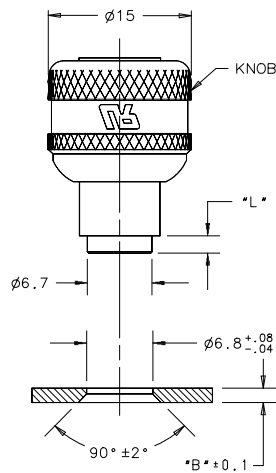
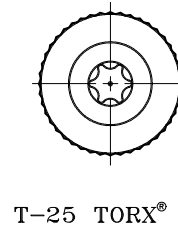
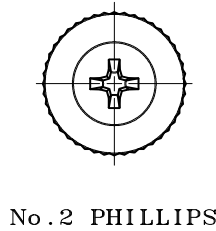
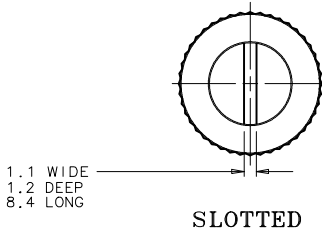
KNOB: ALUMINUM, NATURAL OR BLACK ORGANIC COATING.
SCREW: 1008 CASE HARDENED STEEL, ZINC PLATE CHROMATE PLUS SEALER OR BLACK ORGANIC COATING.
FERRULE: ALUMINUM, NATURAL
SPRING: 302 STAINLESS STEEL, PASSIVATED.
RATCHET MECHANISM: HARDENED STEEL, BLACK OXIDE.

W THREAD	*X* SCREW RECESS	*Y* FINISH ON KNOB & SCREW
1- 10-32	0- SLOTTED	2- NATURAL (BRIGHT)
8- M5	2- PHILLIPS	6- BLACK
	4- TORX®	

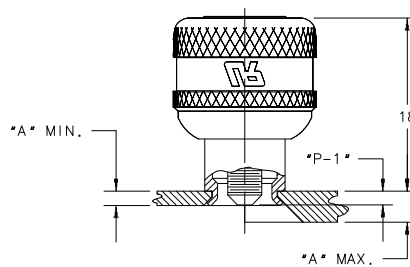
INSTALLATION INSTRUCTIONS:

1. PREPARE HOLE WITH COUNTERSINK ACCORDING TO THE REQUIRED *B* DIMENSION. RECOMMENDED MIN. DISTANCE FROM EDGE OF PANEL TO THE CENTERLINE OF THE HOLE IS 12.
2. INSERT FASTENER AND FLARE INTO COUNTERSUNK HOLE WITH INSTALLATION TOOL PART No. 47-115.
3. HAND TIGHTEN FIRMLY TO ENGAGE THE RATCHET MECHANISM.

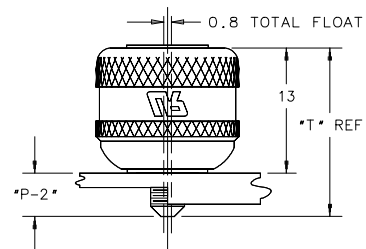
SCREW RECESS STYLES



PANEL PREPARATION



UNFASTENED



FASTENED